

A 909–A 911 Compact Litronic

LIEBHERR

Wheeled excavators

Generation
8

Engine
55 kW / 75 PS
80 kW / 109 HP*
Stage V
Tier 4 Final

Operating weight
9,900–12,800 kg

Bucket capacity
0.15–0.48 m³

* Optional



Performance

Compact, flexible – perfect combination for maximum performance

Economy

A sound investment – optimum economy and environmentally friendly

Reliability

Competence, consistency, innovation – proven experience

Comfort

Ergonomic excellence – superior cab design for operator comfort and wellbeing

Maintainability

Service every step of the way – simple, fast and reliable





A 909 Compact Litronic

Operating weight
9,900–11,500 kg

Engine
55 kW / 75 HP
80 kW / 109 HP *
Stage V
Tier 4 Final

Bucket capacity
0.15–0.48 m³

A 911 Compact Litronic

Operating weight
11,000–12,800 kg

Engine
55 kW / 75 HP
80 kW / 109 HP *
Stage V
Tier 4 Final

Bucket capacity
0.15–0.48 m³

* Optional

Well thought out to the last detail





Four wheel steering & crab steering

- Significantly more manoeuvrable and flexible – convenient and fast relocation even in confined spaces
- Turning radius of less than 4.0 m* for outstanding manoeuvrability



Perfect all around visibility & clarity

- Large glass surfaces and wide windshield for unrestricted all around visibility
- Rear and side area monitoring camera as standard enables optimum visibility of the working area and creates safety around the machine



Maximum performance

- The powerful hydraulic system enables the use of high-performance hydraulic tools
- The powerful motor and high acceleration ensure maximum flexibility in every area of application

* with the A 909 Compact

Convincing in operation



Performance

Sensitive hydraulics

Optimum coordination between engine and main control block enables direct and fast response behaviour of the hydraulics. The proportional control ensures that the joystick movement is smooth and gentle. This creates fluid work processes without interruptions, while the demand-orientated adjustability of the machine ensures optimum adaptation to different applications possible.

Wide range of attachments

Power-intensive attachments such as mulchers or tillers expand the range of applications and in some cases replace larger mobile excavator models. Due to the optimum tuning between the hydraulic system and the attachment, the customer benefits from the best possible conditions for efficient and high-performance work.

Travel speed

The standard travel speed of 20 km/h can be used for both machines using the optional PowerPack. 80 kW / 109 HP can be increased to up to 37 km/h, which significantly increases productivity for the customer.

Off-road capability

High ground clearance ensures optimum off-road mobility of the machines and provides the best traction and tractive power for optimum conditions on any surface.

Economy

Automatic idling & Engine switch-off

The standard automatic idle reduces the engine speed to idle level as soon as the hand leaves the joystick and no hydraulic function is active. Proximity sensors in the crossgate levers restore the original speed again as soon as the hand approaches. This saves fuel and reduces noise. The optional motor switch-off also reduces operating costs.

Profitability over the entire service life

Due to durable components, high machine efficiency during operation, and a well thought-out design, you benefit from both a low cost of ownership and high resale value.

Low transport costs

The transport to the next construction site is easy with the optional 30 km/h and 37 km/h speed variants. The compact design also reduces the transport costs, in case a low-loader is needed for relocation of the machine.

Reliability

Wide range of applications

Thanks to their compact design the A 909 Compact and A 911 Compact offer high flexibility in urban applications and on construction sites with restricted access. Whether for digging work or load lifting work in confined spaces.

Headlights LED light package

The powerful LED light packages ensure optimum illumination and thus increase safety and precision for night or bad weather applications. Durable LEDs minimise maintenance costs and downtime.

Pipe burst protection and load holding valves

The standard pipe rupture safety devices on stroke, adjustment and stem cylinders prevent uncontrolled sinking of the equipment and ensure maximum safety for every application.

Robust construction

All steel parts are manufactured and designed by Liebherr. Made from high-strength sheet steel, designed for the toughest requirements, and results in high torsional rigidity and optimum absorption of the initiated forces for a long lifetime.

High-quality products

In our experience, understanding customer requirements and their technical implementation guarantees product success. Liebherr has decades of experience in vertical integration and system solutions. Key components such as electronic components, slewing rings, swivel drives and hydraulic cylinders are developed and produced by Liebherr. The large vertical range of manufacture guarantees the highest quality and enables optimum coordination of the components with each other.

Comfort

Large cab

With the largest cab in its class the machines offer a comfortable working environment with plenty of space and optimised legroom and headroom. Large glass surfaces and the wide windshield enable unrestricted all around visibility. A generous sliding window also allows for communication outside of the cab.

Comfortable equipment

Two seat variants, standard and comfort offer individualised seating with air suspension, heated seats, head restraint and lumbar support. The standard air conditioning system is controlled via touchscreen and ensures optimum ventilation in the head, chest and foot area. A heated and cooling cup holder, power sockets as well as various storage compartments maximise comfort.

INTUSI – Intuitive operating system

INTUSI offers customisable control for precise, efficient machine operation. Joystick functions, display contents and control buttons can be flexibly customised. The dual display system combines a quick access display with a large main display. Ergonomic positioning ensures optimum visibility and intuitive operation. Open system architecture and regular updates make INTUSI future-proof. Integrating new assistance systems seamlessly allows machines to stay up to date – for long-term investment security and maximum performance.

Electrical servo control

The standard equipment on the machines built-in electrical servo control forms the basis for integration future assistance systems meeting customer requirements of the future. This innovative technology enables quieter operation, low-vibration and fatigue-free work.

Maintainability

Centralised lubrication

A central lubrication point on the undercarriage (optional) enables simple and targeted lubrication, while the central lubrication for the upper carriage and equipment (optional) ensures an even and continuous supply of all relevant components. This increases the service life and minimises the maintenance effort.

Daily maintenance from the floor

All relevant maintenance points are comfortable and ergonomic from the floor and due to the easily accessible wide opening service door.

Efficient service

The structure and concept of the machines facilitate their maintenance and repair. The Liebherr spare part service guarantees a 24-hour readiness to deliver, so that the required parts are quickly available at all times. In addition, the electronic spare parts catalogue offers a quick select and order directly via the Liebherr online portal.

Wheeled excavator overview

Innovative cab design meets intuitive control system

- Cab with advanced intuitive INTUSI operating and dual display concept
- 10" main display with haptic user interface feedback
- 3.5" display with additional user interface for customisable operation
- Comfortable operator's seat *
- Air conditioning
- Joysticks Premium
- Joystick steering *
- Large-area glazing & wide windshield
- Air-conditioned bottle cage
- Storage compartment for tablet & further storage nets
- Radio comfort with hands-free system *
- Powerful LED headlights
- Rear area monitoring and side area monitoring

Optimally designed reliable equipment

- Liebherr hydraulic cylinders
- Adjustable boom for digging work
- Adjustable jib laterally adjustable for load lifting *
- Pipe rupture safety devices for lift, adjustment and stem cylinders
- Load-holding valves tilt cylinder *
- Float position of the boom *
- Overload warning device
- Liebherr quick-change systems *
- Wide selection of Liebherr attachments *

* Optional





Superior technology for maximum efficiency

- Diesel engine with 55 kW and 80 kW* in accordance with emission stages V and Tier 4 final
- Exhaust gas treatment with SCR technology and diesel particulate filter*
- Liebherr-Power-Efficiency (LPE)
- Load sensing control
- Selection of different operating modes (Sensitive, ECO, Power, Power-Plus)
- Sensor-controlled automatic idling

Sophisticated maintenance concept for maximum productivity

- Fully automatic central lubrication system for uppercarriage and equipment*
- Central maintenance points are accessible from the ground
- Convenient and easy to change cab air filter
- Use of high-quality, durable components
- Coordinated service intervals for low operating costs and minimum downtimes

Perfect combination for maximum performance

- Short rear and front swivelling radii
- Four wheel steering*
- Automatic working brake*
- Various maintenance-free support variants*
- Twin tyres without intermediate rings and single tyres*
- Trailer coupling*

Technical data



Diesel engine

Rating per ISO 9249	55 kW (75 HP) at 2,000 RPM 80 kW (109 HP) at 2,200 RPM (optional)
Model	KUBOTA V3800
Type	4 cylinder in-line
Bore / Stroke	100 / 120 mm
Displacement	3.8 l
Engine operation	4-stroke diesel Common-Rail Direct injection Turbo-charged and after-cooled ¹⁾ Reduced emissions
Air cleaner	Dry-type air cleaner with pre-cleaner, primary and safety elements
Engine idling	Sensor controlled
Electrical system	
Voltage	24 V
Batteries	2 x 95 Ah / 12 V
Stage V	
Emission control	55 kW: EGR, DOC / DPF 80 kW: EGR, DOC / DPF + SCR
Fuel tank	130 l
Urea tank	20 l
Tier 4 Final	
Emission control	SCR technology ²⁾
Fuel tank	130 l
Urea tank	20 l



Cooling system

Diesel engine	Water-cooled Compact cooling system consisting cooling unit for water, hydraulic oil and charge air with stepless thermostatically controlled fan
----------------------	--



Hydraulic controls

Power distribution	Via control valves with integrated safety valves, simultaneous and independent actuation of chassis, swing drive and equipment
Servo circuit	
Equipment and swing	With electro-hydraulic pilot control and proportional joystick levers
Chassis	Electro-proportional via foot pedal
Additional functions	Via switch or electro-proportional foot pedals
Proportional control	Proportionally acting transmitters on the joysticks for additional hydraulic functions



Hydraulic system

Hydraulic pump	Liebherr axial piston variable displacement pump
For equipment and travel drive	194 l/min. at 1,800 RPM (operation)
Max. flow	237 l/min. at 2,200 RPM (driving)
Max. pressure	350 bar
Hydraulic pump regulation and control	Liebherr-Synchron-Comfort-system (LSC) with electronic engine speed sensing regulation, pressure and flow compensation, torque controlled swing drive priority
Hydraulic tank	93 l
Hydraulic system	max. 105 l
MODE selection	Adjustment of engine and hydraulic performance via a mode pre-selector to match application, e.g. for especially economical and environmentally friendly operation or for maximum digging performance and heavy-duty jobs
S (Sensitive)	Mode for precision work and lifting through very sensitive movements
E (Eco)	Mode for especially economical and environmentally friendly operation
P (Power)	Mode for high performance with low fuel consumption
P+ (Power-Plus)	Mode for highest performance and for very heavy duty applications, suitable for continuous operation
Engine speed and performance setting	Stepless alignment of engine output and hydraulic power via engine speed
Option	Tool Control: 20 pre-adjustable pump flows and pressures for add-on attachments
Additional function	Extended hydraulic circuit (preparation for tiltrotator) for special applications



Swing drive

Drive	Liebherr axial piston motor with integrated brake valve and torque control
Swing ring	Liebherr, sealed race ball bearing swing ring, internal teeth
Swing speed	0–10.0 RPM stepless
Swing torque	28 kNm
Holding brake	Wet multi-disc (spring applied, pressure released)
Option	Positioning swing brake manual Positioning swing brake automatic

¹⁾ 55 kW variant without aftercooler, 80 kW variant with aftercooler

²⁾ only for 80 kW variant

³⁾ optionally configurable with two-piece boom equipment; no extended hydraulic circuit (preparation for tiltrotator) available with two-piece boom offset



Cab

Cab	ROPS safety cab structure (roll-over protection system) with individual windscreens or featuring a slide-in subpart under the ceiling, headlights integrated in the ceiling, a door with a sliding window, large stowing and depositing possibilities, shock-absorbing suspension, sound damping insulating, laminated safety glass, separate window shades for the sunroof window and windscreen
Operator's seat Standard	Air cushioned operator's seat with 3D-adjustable arm-rests, headrest, lap belt, seat heater (1-stage), manual weight adjustment and mechanical lumbar vertebrae support
Operator's seat Comfort (Option)	In addition to operator's seat standard: lockable horizontal suspension, automatic weight adjustment, adjustable suspension stiffness, pneumatic lumbar vertebrae support, passive seat climatisation with active coal and seat heater (2-stage)
Arm consoles	Joysticks with control consoles and swivel seat, folding left control console
Operation and displays	Large high-resolution operating unit, self-explanatory, colour display with touchscreen, video-compatible, numerous setting, control and monitoring options, e.g. air conditioning control, fuel consumption, machine and attachment parameters
Air-conditioning	Air-conditioning, recirculated air function, fast de-icing and demisting at the press of a button, air vents can be operated via a menu; recirculated air and fresh air filters can be easily replaced and are accessible from the outside; heating-cooling unit, designed for extreme outside temperatures
Vibration emission*	
Hand / arm vibrations	< 2.5 m/s ²
Whole-body vibrations	< 0.5 m/s ²
Measuring inaccuracy	According with standard EN 12096:1997



Undercarriage

Drive	Oversized two speed power shift transmission with additional creeper speed, Liebherr axial piston motor with functional brake valve on both sides
Pulling force	76 kN
Travel speed	0- 4.0 km/h stepless (creeper speed off-road) 0- 7.0 km/h stepless (off-road) 0-12.0 km/h stepless (creeper speed on-road) 0-20.0 km/h stepless (road travel) 0-max. 30.0 or 37.0 km/h Speeder (option)
Driving operation	Automotive driving using accelerator pedal, cruise control function: storage of variable accelerator pedal positions, both off-road and on-road
Axles	8t drive axles; manual or automatic hydraulically controlled front axle oscillation lock
Option	Four wheel steering
Steering programs	Front wheel, rear wheel and all-wheel steering, move to the side in crab steering possible, turning on the spot
Service brake	Two circuit travel brake system with accumulator; wet and backlash-free disc brake
Automatic digging brake	Works automatically when driving off (accelerator pedal actuation) and when the machine is stationary (engagement); the digging brake engages automatically - can be coupled with automatic swing axle lock
Holding brake	Wet multi-disc (spring applied, pressure released)
Stabilization	Rear stabilizer blade Rear outriggers + front stabilizer blade Rear two-piece + front stabilizer blade



Equipment

Type	High-strength steel plates at highly-stressed points for the toughest requirements. Complex and stable mountings of equipment and cylinders
Hydraulic cylinders	Cylinders with special sealing and guide system and, depending on cylinder type, shock absorption
Bearings	Sealed, low maintenance

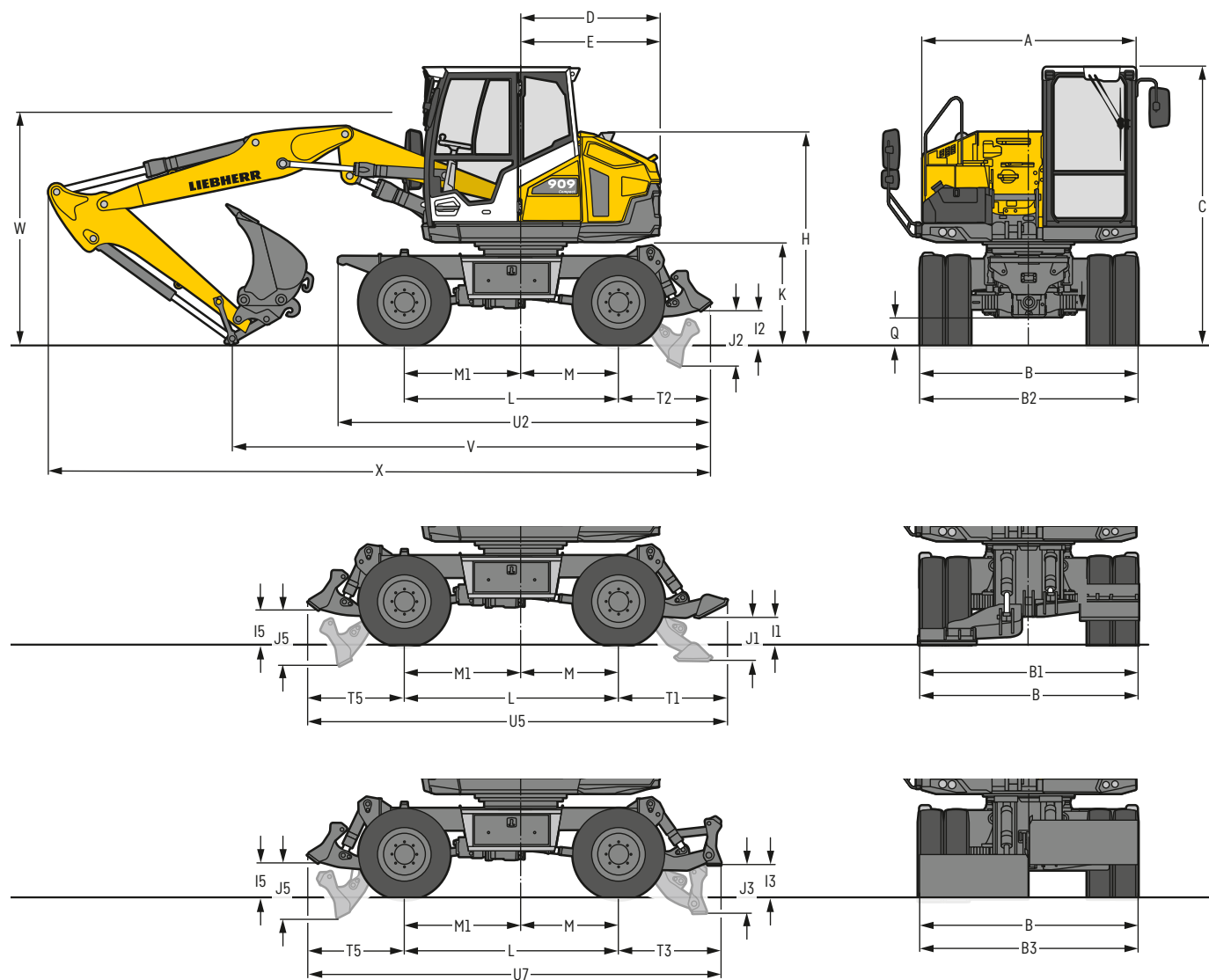


Complete machine

Lubrication	Liebherr central lubrication system for uppercarriage and equipment, automatically
Steps system	Safe and durable access system with anti-slip steps; main components hot-galvanised
Noise emission	
ISO 6396	76 dB(A) = L _{PA} (inside cab)
2000/14/EC	99 dB(A) = L _{WA} (surround noise)

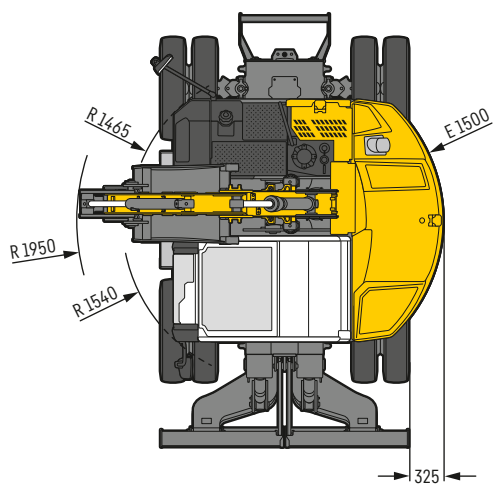
* for risk assessment according to 2002/44/EC see ISO/TR 25398:2006

A 909 Compact – Dimensions



	mm
A	2,300
B	2,350
B1	2,350
B2	2,350
B3	2,350
C	3,000
D	1,500
E	1,500
H	2,295
I1	295
I2	375
I3	350
I5	375
J1	465
J2	595
J3	520
J5	595
K	1,100
L	2,300
M	1,050
M1	1,250
Q	300
T1	1,175
T2	990
T3	1,100
T5	1,040
U2	4,000
U5	4,515
U7	4,440

E = Tail radius
Tyres 8.25-20



Min. turning radius on tyres 9.00-20

Four wheel steering 3.95 m

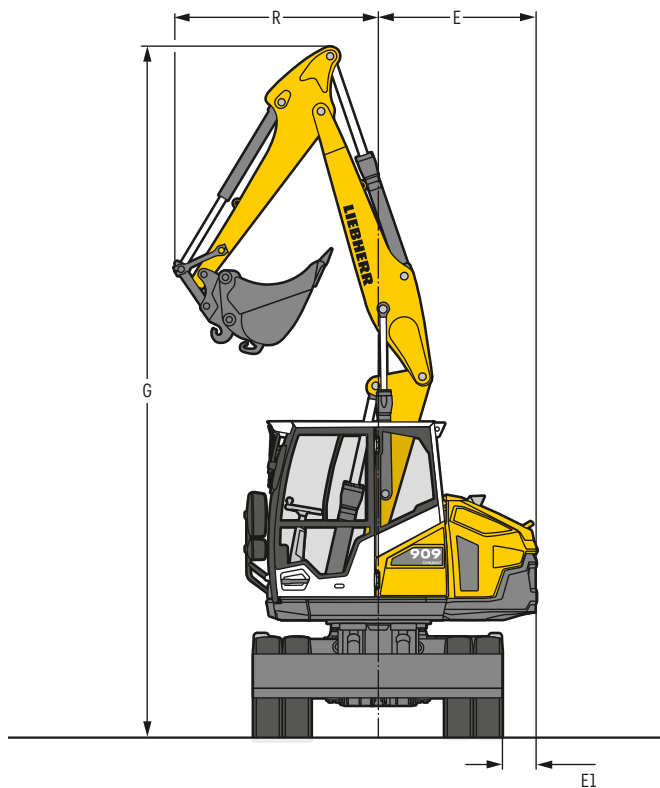
Front wheel steering 6.00 m

	Stick	Two-piece boom 4.40 m		
		Rear blade	Rear outriggers + front blade	Rear two-piece + front blade
	m	mm	mm	mm
V	1.75	5,250	5,400	5,350
	1.90	5,150	5,300	5,250
W	1.75	2,450	2,450	2,450
	1.90	2,500	2,500	2,500
X	1.75	7,150	7,300	7,250
	1.90	7,150	7,300	7,250

	Stick	Offset two-piece boom 4.50 m		
		Rear blade	Rear outriggers + front blade	Rear two-piece + front blade
	m	mm	mm	mm
V	1.90	5,900	6,050	6,000
W	1.90	2,550	2,550	2,550
X	1.90	7,000	7,150	7,100

Dimensions are with equipment over steering axle

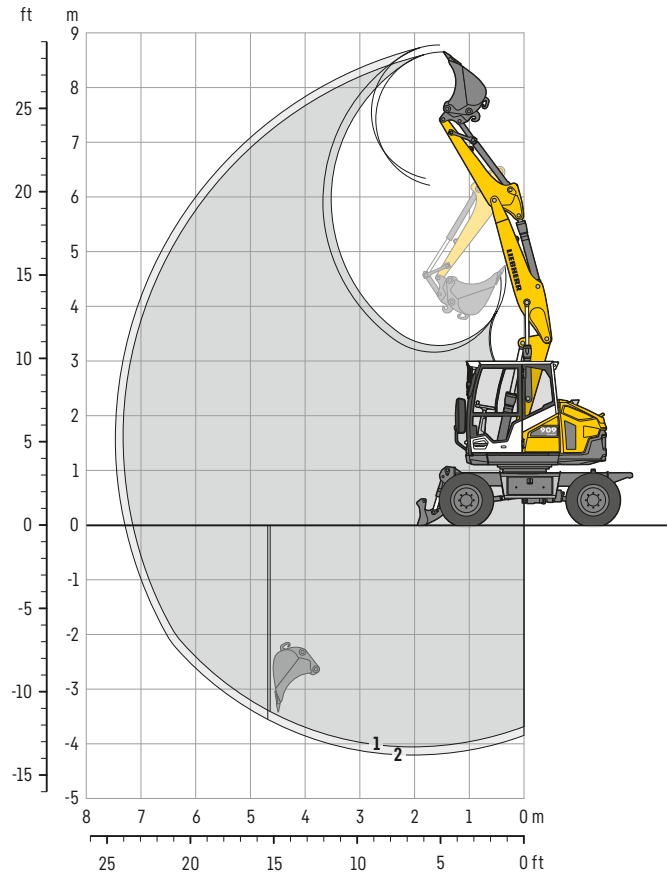
W = Max. ground clearance including approx. 150 mm piping



Boom	Stick m	G mm	R mm	E mm	E1 mm
Two-piece boom 4.40 m	1.75	6,545	1,860	1,500	325
Two-piece boom 4.40 m	1.90	6,545	1,950	1,500	325

A 909 Compact – Backhoe bucket

with two-piece boom 4.40 m



Digging envelope

with quick coupler	1	2
Stick length	m 1.75	1.90
Max. digging depth	m 4.05	4.20
Max. reach at ground level	m 7.15	7.30
Max. dumping height	m 6.20	6.30
Max. teeth height	m 8.65	8.75
Min. equipment radius	m 1.86	1.95

Digging forces

without quick coupler	1	2
Max. digging force (ISO 6015)	kN 47.3	44.4
	t 4.8	4.5
Max. breakout force (ISO 6015)	kN 62.9	62.9
	t 6.4	6.4

Max. breakout force with ripper bucket

61.9 kN (6.3 t)

Operating weight

The operating weight includes the basic machine with 8 tyres plus intermediate rings, two-piece boom 4.40 m, stick 1.90 m, quick coupler SWA 33 and bucket 750 mm / 0.33 m³.

Undercarriage versions	Weight (kg)
A 909 Compact Litronic with rear blade	9,900
A 909 Compact Litronic with rear outriggers + front blade	10,400
A 909 Compact Litronic with rear two-piece + front blade	10,500

Buckets Machine stability per ISO 10567* (75% of tipping capacity)

Cutting width mm	Capacity ISO 7451 ¹⁾ m ³	Weight kg	Stabilizers raised		Rear blade down		Rear outriggers + front blade down		Rear two-piece + front blade down	
			Stick length (m)		Stick length (m)		Stick length (m)		Stick length (m)	
			1.75	1.90	1.75	1.90	1.75	1.90	1.75	1.90
300 ²⁾	0.15	160	■	■	■	■	■	■	■	■
400 ²⁾	0.15	165	■	■	■	■	■	■	■	■
450 ²⁾	0.17	165	■	■	■	■	■	■	■	■
550 ²⁾	0.22	190	■	■	■	■	■	■	■	■
650 ²⁾	0.27	210	■	■	■	■	■	■	■	■
750 ²⁾	0.33	225	■	■	■	■	■	■	■	■
850 ²⁾	0.38	240	■	■	■	■	■	■	■	■
950 ²⁾	0.44	270	■	■	■	■	■	■	■	■
300 ³⁾	0.15	155	■	■	■	■	■	■	■	■
400 ³⁾	0.16	155	■	■	■	■	■	■	■	■
450 ³⁾	0.18	160	■	■	■	■	■	■	■	■
550 ³⁾	0.24	185	■	■	■	■	■	■	■	■
650 ³⁾	0.30	200	■	■	■	■	■	■	■	■
750 ³⁾	0.35	220	■	■	■	■	■	■	■	■
850 ³⁾	0.42	235	■	■	■	■	■	■	■	■
950 ³⁾	0.48	245	■	■	■	■	■	■	■	■

* Indicated loads are based on ISO 10567 and do not exceed 75% of tipping or 87% of hydraulic capacity, max. stick length without quick coupler, lifted 360° on firm with blocked oscillating axle

¹⁾ comparable with SAE (heaped)

²⁾ Bucket with teeth (also available in HD version)

³⁾ Bucket with cutting edge (also available in HD version)

Buckets up to 400 mm cutting width with limited digging depth

Max. material weight ■ = ≤ 1.8 t/m³, ■ = ≤ 1.5 t/m³, ▲ = ≤ 1.2 t/m³, - = not authorised

A 909 Compact – Lift capacities

with two-piece boom 4.40 m

Stick 1.75 m

m	Undercarriage stabilized		2.0m		3.0m		4.0m		5.0m		6.0m		m	
	rear	front												
7.0	-	-			2.3*	2.3*							2.1*	2.1*
	Blade	-			2.3*	2.3*							2.1*	2.1*
	Outriggers	Blade			2.3*	2.3*							2.1*	2.1*
	Two-piece blade	Blade			2.3*	2.3*							2.1*	2.1*
6.0	-	-			2.5*	2.5*	2.3	2.3*					1.8*	1.8*
	Blade	-			2.5*	2.5*	2.3*	2.3*					1.8*	1.8*
	Outriggers	Blade			2.5*	2.5*	2.3*	2.3*					1.8*	1.8*
	Two-piece blade	Blade			2.5*	2.5*	2.3*	2.3*					1.8*	1.8*
5.0	-	-			2.5*	2.5*	2.3	2.6*	1.6	2.2*			1.4	1.7*
	Blade	-			2.5*	2.5*	2.6	2.6*	1.8	2.2*			1.5	1.7*
	Outriggers	Blade			2.5*	2.5*	2.6*	2.6*	2.2	2.2*			1.7*	1.7*
	Two-piece blade	Blade			2.5*	2.5*	2.6*	2.6*	2.2*	2.2*			1.7*	1.7*
4.0	-	-	2.9*	2.9*	3.1*	3.1*	2.3	2.9*	1.6	2.4			1.1	1.6*
	Blade	-	2.9*	2.9*	3.1*	3.1*	2.5	2.9*	1.8	2.5*			1.3	1.6*
	Outriggers	Blade	2.9*	2.9*	3.1*	3.1*	2.9*	2.9*	2.2	2.5*			1.6	1.6*
	Two-piece blade	Blade	2.9*	2.9*	3.1*	3.1*	2.9*	2.9*	2.2	2.5*			1.6	1.6*
3.0	-	-	5.5*	5.5*	3.4	4.2*	2.3	3.2*	1.6	2.4	1.1	1.7	1.0	1.6
	Blade	-	5.5*	5.5*	3.8	4.2*	2.5	3.2*	1.8	2.6*	1.2	2.1*	1.2	1.7*
	Outriggers	Blade	5.5*	5.5*	4.2*	4.2*	3.0	3.2*	2.2	2.6*	1.6	2.1*	1.5	1.7*
	Two-piece blade	Blade	5.5*	5.5*	4.2*	4.2*	3.0	3.2*	2.2	2.6*	1.6	2.1*	1.5	1.7*
2.0	-	-	5.9*	5.9*	3.3	4.5*	2.2	3.2	1.5	2.4	1.1	1.7	0.9	1.5
	Blade	-	5.9*	5.9*	3.7	4.5*	2.5	3.3*	1.7	2.6*	1.2	2.2*	1.1	1.8*
	Outriggers	Blade	5.9*	5.9*	4.4	4.5*	2.9	3.3*	2.1	2.6*	1.5	2.2*	1.4	1.8*
	Two-piece blade	Blade	5.9*	5.9*	4.4	4.5*	3.0	3.3*	2.2	2.6*	1.6	2.2*	1.4	1.8*
1.0	-	-	6.1	6.3*	3.3	4.6*	2.2	3.2	1.5	2.3	1.0	1.7	0.9	1.5
	Blade	-	6.3*	6.3*	3.7	4.6*	2.4	3.3*	1.7	2.6*	1.2	2.1*	1.1	1.9*
	Outriggers	Blade	6.3*	6.3*	4.4	4.6*	2.9	3.3*	2.1	2.6*	1.5	2.1*	1.4	1.9*
	Two-piece blade	Blade	6.3*	6.3*	4.4	4.6*	3.0	3.3*	2.1	2.6*	1.5	2.1*	1.4	1.9*
0	-	-	6.1	7.0*	3.2	4.6*	2.1	3.2	1.4	2.2	1.0	1.6	0.9	1.6
	Blade	-	7.0	7.0*	3.6	4.6*	2.3	3.4*	1.6	2.7*	1.1	1.9*	1.1	1.7*
	Outriggers	Blade	7.0*	7.0*	4.4	4.6*	2.9	3.4*	2.0	2.7*	1.5	1.9*	1.4	1.7*
	Two-piece blade	Blade	7.0*	7.0*	4.5	4.6*	3.0	3.4*	2.0	2.7*	1.5	1.9*	1.4	1.7*
-1.0	-	-	5.9	7.3*	3.0	4.7*	1.9	3.2	1.3	2.2			1.0	1.5*
	Blade	-	7.1	7.3*	3.5	4.7*	2.2	3.4*	1.5	2.5*			1.2	1.5*
	Outriggers	Blade	7.3*	7.3*	4.5	4.7*	2.8	3.4*	1.9	2.5*			1.5	1.5*
	Two-piece blade	Blade	7.3*	7.3*	4.5	4.7*	2.8	3.4*	2.0	2.5*			1.5*	1.5*
-2.0	-	-	5.9	7.3*	2.9	4.6*	1.8	3.0*	1.3	1.6*			1.3	1.4*
	Blade	-	7.0	7.3*	3.4	4.6*	2.1	3.0*	1.5	1.6*			1.4*	1.4*
	Outriggers	Blade	7.3*	7.3*	4.4	4.6*	2.7	3.0*	1.6*	1.6*			1.4*	1.4*
	Two-piece blade	Blade	7.3*	7.3*	4.4	4.6*	2.7	3.0*	1.6*	1.6*			1.4*	1.4*
-3.0	-	-	5.0*	5.0*	2.9	2.9*							2.4*	2.4*
	Blade	-	5.0*	5.0*	2.9*	2.9*							2.4*	2.4*
	Outriggers	Blade	5.0*	5.0*	2.9*	2.9*							2.4*	2.4*
	Two-piece blade	Blade	5.0*	5.0*	2.9*	2.9*							2.4*	2.4*

 Height  Can be slewed through 360°  In longitudinal position of undercarriage  Max. reach * Limited by hydr. capacity

The lift capacities on the load hook of the Liebherr quick coupler SWA 33 without attachment are stated in metric tons (t) and are valid on a firm, level supporting surface with blocked oscillating axle. These capacities can be slewed through 360° with the undercarriage in the transverse position. Capacities in the longitudinal position of the undercarriage (+15°) are specified over the steering axle with the stabilizers raised and over the rigid axle with the stabilizers down. The values apply when the adjusting cylinder is in the optimal position. Indicated loads based on the ISO 10567 standard and do not exceed 75% of tipping or 87% of hydraulic capacity, or are limited by the permissible load of the load hook on the quick coupler (max. 5 t). Without the quick coupler, lift capacities will increase by up to 110 kg.

In accordance with the harmonised European Standard EN 474-5, hydraulic excavators used for lifting operations must be equipped with pipe fracture safety valves, an overload warning device, a load hook and a lift capacity chart.

A 909 Compact – Lift capacities

with two-piece boom 4.40 m

Stick 1.90 m

m	Undercarriage stabilized		2.0m		3.0m		4.0m		5.0m		6.0m		m	
	rear	front												
7.0	-	-			2.3*	2.3*							1.9*	1.9*
	Blade	-			2.3*	2.3*							1.9*	1.9*
	Outriggers	Blade			2.3*	2.3*							1.9*	1.9*
	Two-piece blade	Blade			2.3*	2.3*							1.9*	1.9*
6.0	-	-			2.3*	2.3*	2.2*	2.2*					1.7*	1.7*
	Blade	-			2.3*	2.3*	2.2*	2.2*					1.7*	1.7*
	Outriggers	Blade			2.3*	2.3*	2.2*	2.2*					1.7*	1.7*
	Two-piece blade	Blade			2.3*	2.3*	2.2*	2.2*					1.7*	1.7*
5.0	-	-			2.3*	2.3*	2.3	2.4*	1.6	2.1*			1.3	1.5*
	Blade	-			2.3*	2.3*	2.4*	2.4*	1.8	2.1*			1.5	1.5*
	Outriggers	Blade			2.3*	2.3*	2.4*	2.4*	2.1*	2.1*			1.5*	1.5*
	Two-piece blade	Blade			2.3*	2.3*	2.4*	2.4*	2.1*	2.1*			1.5*	1.5*
4.0	-	-	2.4*	2.4*	2.7*	2.7*	2.3	2.7*	1.6	2.4	1.1	1.6*	1.1	1.5*
	Blade	-	2.4*	2.4*	2.7*	2.7*	2.5	2.7*	1.8	2.5*	1.3	1.6*	1.2	1.5*
	Outriggers	Blade	2.4*	2.4*	2.7*	2.7*	2.7*	2.7*	2.2	2.5*	1.6*	1.6*	1.5*	1.5*
	Two-piece blade	Blade	2.4*	2.4*	2.7*	2.7*	2.7*	2.7*	2.2	2.5*	1.6*	1.6*	1.5*	1.5*
3.0	-	-	5.4*	5.4*	3.4	4.1*	2.3	3.1*	1.6	2.4	1.1	1.7	1.0	1.5*
	Blade	-	5.4*	5.4*	3.8	4.1*	2.5	3.1*	1.8	2.5*	1.3	2.2*	1.1	1.5*
	Outriggers	Blade	5.4*	5.4*	4.1*	4.1*	3.0	3.1*	2.2	2.5*	1.6	2.2*	1.4	1.5*
	Two-piece blade	Blade	5.4*	5.4*	4.1*	4.1*	3.0	3.1*	2.2	2.5*	1.6	2.2*	1.4	1.5*
2.0	-	-	5.9*	5.9*	3.3	4.5*	2.2	3.2	1.5	2.4	1.1	1.7	0.9	1.5
	Blade	-	5.9*	5.9*	3.7	4.5*	2.5	3.3*	1.7	2.6*	1.2	2.1*	1.1	1.6*
	Outriggers	Blade	5.9*	5.9*	4.4	4.5*	2.9	3.3*	2.2	2.6*	1.5	2.1*	1.3	1.6*
	Two-piece blade	Blade	5.9*	5.9*	4.4	4.5*	3.0	3.3*	2.2	2.6*	1.6	2.1*	1.4	1.6*
1.0	-	-	6.1	6.3*	3.3	4.6*	2.2	3.2	1.5	2.3	1.0	1.7	0.9	1.5
	Blade	-	6.3*	6.3*	3.7	4.6*	2.5	3.3*	1.7	2.6*	1.2	2.1*	1.0	1.7*
	Outriggers	Blade	6.3*	6.3*	4.4	4.6*	2.9	3.3*	2.1	2.6*	1.5	2.1*	1.3	1.7*
	Two-piece blade	Blade	6.3*	6.3*	4.4	4.6*	2.9	3.3*	2.1	2.6*	1.5	2.1*	1.3	1.7*
0	-	-	6.2	6.9*	3.2	4.6*	2.1	3.2	1.4	2.3	1.0	1.7	0.9	1.5
	Blade	-	6.9*	6.9*	3.6	4.6*	2.3	3.3*	1.6	2.6*	1.2	2.0*	1.1	1.7*
	Outriggers	Blade	6.9*	6.9*	4.4	4.6*	2.9	3.3*	2.0	2.6*	1.5	2.0*	1.4	1.7*
	Two-piece blade	Blade	6.9*	6.9*	4.5	4.6*	3.0	3.3*	2.0	2.6*	1.5	2.0*	1.4	1.7*
-1.0	-	-	5.9	7.3*	3.0	4.7*	2.0	3.2	1.3	2.2			1.0	1.5*
	Blade	-	7.1	7.3*	3.5	4.7*	2.2	3.4*	1.5	2.6*			1.1	1.5*
	Outriggers	Blade	7.3*	7.3*	4.5	4.7*	2.8	3.4*	1.9	2.6*			1.5	1.5*
	Two-piece blade	Blade	7.3*	7.3*	4.6	4.7*	2.9	3.4*	2.0	2.6*			1.5	1.5*
-2.0	-	-	5.9	7.3*	2.9	4.7*	1.8	3.1	1.3	1.9*			1.2	1.3*
	Blade	-	7.0	7.3*	3.4	4.7*	2.1	3.1*	1.5	1.9*			1.3*	1.3*
	Outriggers	Blade	7.3*	7.3*	4.4	4.7*	2.7	3.1*	1.9*	1.9*			1.3*	1.3*
	Two-piece blade	Blade	7.3*	7.3*	4.4	4.7*	2.7	3.1*	1.9*	1.9*			1.3*	1.3*
-3.0	-	-	5.6*	5.6*	2.9	3.3*							2.0	2.1*
	Blade	-	5.6*	5.6*	3.3*	3.3*							2.1*	2.1*
	Outriggers	Blade	5.6*	5.6*	3.3*	3.3*							2.1*	2.1*
	Two-piece blade	Blade	5.6*	5.6*	3.3*	3.3*							2.1*	2.1*

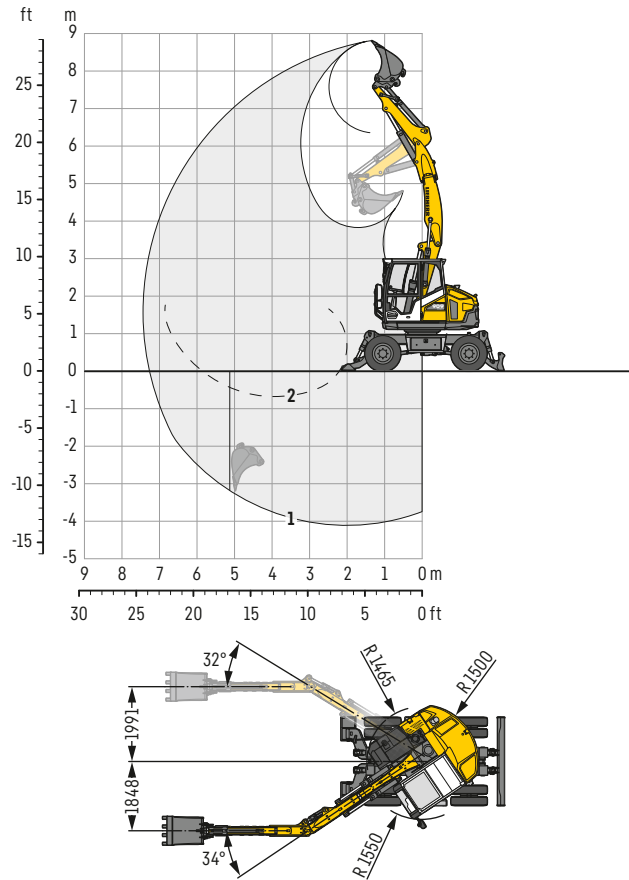
 Height  Can be slewed through 360°  In longitudinal position of undercarriage  Max. reach * Limited by hydr. capacity

The lift capacities on the load hook of the Liebherr quick coupler SWA 33 without attachment are stated in metric tons (t) and are valid on a firm, level supporting surface with blocked oscillating axle. These capacities can be slewed through 360° with the undercarriage in the transverse position. Capacities in the longitudinal position of the undercarriage (+15°) are specified over the steering axle with the stabilizers raised and over the rigid axle with the stabilizers down. The values apply when the adjusting cylinder is in the optimal position. Indicated loads based on the ISO 10567 standard and do not exceed 75% of tipping or 87% of hydraulic capacity, or are limited by the permissible load of the load hook on the quick coupler (max. 5 t). Without the quick coupler, lift capacities will increase by up to 110 kg.

In accordance with the harmonised European Standard EN 474-5, hydraulic excavators used for lifting operations must be equipped with pipe fracture safety valves, an overload warning device, a load hook and a lift capacity chart.

A 909 Compact – Backhoe bucket

with offset two-piece boom 4.50 m



Digging envelope

with quick coupler		1
Stick length	m	1.90
Max. digging depth	m	4.10
Max. reach at ground level	m	7.25
Max. dumping height	m	6.35
Max. teeth height	m	8.80
Min. equipment radius	m	1.96

1 with stick 1.90 m
with set straight boom

2 with stick 1.90 m
at max. equipment offset with vertical ditch walls

Digging forces

without quick coupler		1
Max. digging force (ISO 6015)	kN	40.2
	t	4.1
Max. breakout force (ISO 6015)	kN	62.9
	t	6.4

Max. breakout force with ripper bucket

61.9 kN (6.3 t)

Operating weight

The operating weight includes the basic machine with 8 tyres plus intermediate rings, offset two-piece boom 4.50 m, stick 1.90 m, quick coupler SWA 33 and bucket 750 mm / 0.33 m³.

Undercarriage versions	Weight (kg)
A 909 Compact Litronic with rear blade	10,100
A 909 Compact Litronic with rear outriggers + front blade	10,600
A 909 Compact Litronic with rear two-piece + front blade	10,800

Buckets Machine stability per ISO 10567* (75% of tipping capacity)

Cutting width mm	Capacity ISO 7451 ¹⁾ m³	Weight kg	Stabilizers raised	Rear blade down	Rear outriggers + front blade down	Rear two-piece + front blade down
			Stick length (m) 1.90	Stick length (m) 1.90	Stick length (m) 1.90	Stick length (m) 1.90
300 ²⁾	0.15	160	■	■	■	■
400 ²⁾	0.15	165	■	■	■	■
450 ²⁾	0.17	165	■	■	■	■
550 ²⁾	0.22	190	■	■	■	■
650 ²⁾	0.27	210	■	■	■	■
750 ²⁾	0.33	225	■	■	■	■
850 ²⁾	0.38	240	■	■	■	■
950 ²⁾	0.44	270	■	■	■	■
300 ³⁾	0.15	155	■	■	■	■
400 ³⁾	0.16	155	■	■	■	■
450 ³⁾	0.18	160	■	■	■	■
550 ³⁾	0.24	185	■	■	■	■
650 ³⁾	0.30	200	■	■	■	■
750 ³⁾	0.35	220	■	■	■	■
850 ³⁾	0.42	235	■	■	■	■
950 ³⁾	0.48	245	■	■	■	■

* Indicated loads are based on ISO 10567 and do not exceed 75% of tipping or 87% of hydraulic capacity, max. stick length without quick coupler, lifted 360° on firm with blocked oscillating axle

¹⁾ comparable with SAE (heaped)

²⁾ Bucket with teeth (also available in HD version)

³⁾ Bucket with cutting edge (also available in HD version)

Buckets up to 400 mm cutting width with limited digging depth

Max. material weight ■ = ≤ 1.8 t/m³, ■ = ≤ 1.5 t/m³, ▲ = ≤ 1.2 t/m³, - = not authorised

A 909 Compact – Lift capacities

with offset two-piece boom 4.50 m

Stick 1.90 m

m	Undercarriage stabilized		2.0m		3.0m		4.0m		5.0m		6.0m		m	
	rear	front												
7.0	-	-			3.5*	3.5*							3.0	3.3*
	Blade	-			3.5*	3.5*							3.3*	3.3*
	Outriggers	Blade			3.5*	3.5*							3.3*	3.3*
	Two-piece blade	Blade			3.5*	3.5*							3.3*	3.3*
6.0	-	-			3.4*	3.4*	2.3	2.8*					1.7	2.6*
	Blade	-			3.4*	3.4*	2.6	2.8*					2.0	2.6*
	Outriggers	Blade			3.4*	3.4*	2.8*	2.8*					2.4	2.6*
	Two-piece blade	Blade			3.4*	3.4*	2.8*	2.8*					2.5	2.6*
5.0	-	-			3.5*	3.5*	2.3	2.9*	1.5	2.4			1.3	2.1
	Blade	-			3.5*	3.5*	2.5	2.9*	1.7	2.4*			1.5	2.3*
	Outriggers	Blade			3.5*	3.5*	2.9*	2.9*	2.1	2.4*			1.8	2.3*
	Two-piece blade	Blade			3.5*	3.5*	2.9*	2.9*	2.2	2.4*			1.9	2.3*
4.0	-	-			3.5	3.8*	2.3	3.0*	1.5	2.3			1.0	1.7
	Blade	-			3.8*	3.8*	2.5	3.0*	1.7	2.5*			1.2	2.1*
	Outriggers	Blade			3.8*	3.8*	3.0*	3.0*	2.1	2.5*			1.5	2.1*
	Two-piece blade	Blade			3.8*	3.8*	3.0*	3.0*	2.2	2.5*			1.5	2.1*
3.0	-	-			3.3	3.9*	2.2	3.1*	1.5	2.3	1.0	1.7	0.9	1.5
	Blade	-			3.7	3.9*	2.4	3.1*	1.7	2.5*	1.2	2.1*	1.1	2.0*
	Outriggers	Blade			3.9*	3.9*	2.9	3.1*	2.1	2.5*	1.5	2.1*	1.4	2.0*
	Two-piece blade	Blade			3.9*	3.9*	2.9	3.1*	2.1	2.5*	1.5	2.1*	1.4	2.0*
2.0	-	-	4.9*	4.9*	3.2	4.2*	2.2	3.1	1.4	2.3	1.0	1.6	0.8	1.4
	Blade	-	4.9*	4.9*	3.6	4.2*	2.4	3.2*	1.6	2.5*	1.1	2.0*	1.0	1.8*
	Outriggers	Blade	4.9*	4.9*	4.2*	4.2*	2.8	3.2*	2.1	2.5*	1.4	2.0*	1.3	1.8*
	Two-piece blade	Blade	4.9*	4.9*	4.2*	4.2*	2.9	3.2*	2.1	2.5*	1.5	2.0*	1.3	1.8*
1.0	-	-	6.0	6.4*	3.2	4.4*	2.1	3.1	1.4	2.2	0.9	1.6	0.8	1.4
	Blade	-	6.4*	6.4*	3.6	4.4*	2.4	3.2*	1.6	2.5*	1.1	2.0*	1.0	1.7*
	Outriggers	Blade	6.4*	6.4*	4.2	4.4*	2.8	3.2*	2.0	2.5*	1.4	2.0*	1.2	1.7*
	Two-piece blade	Blade	6.4*	6.4*	4.3	4.4*	2.9	3.2*	2.0	2.5*	1.4	2.0*	1.3	1.7*
0	-	-	6.1	6.8*	3.1	4.4*	2.0	3.1	1.3	2.1	0.9	1.5	0.8	1.5
	Blade	-	6.8*	6.8*	3.6	4.4*	2.2	3.2*	1.5	2.5*	1.0	1.8*	1.0	1.5*
	Outriggers	Blade	6.8*	6.8*	4.3	4.4*	2.8	3.2*	1.9	2.5*	1.4	1.8*	1.3	1.5*
	Two-piece blade	Blade	6.8*	6.8*	4.3	4.4*	2.9	3.2*	1.9	2.5*	1.4	1.8*	1.3	1.5*
-1.0	-	-	5.8	7.1*	2.9	4.5*	1.8	3.0	1.2	2.1			0.9	1.3*
	Blade	-	6.9	7.1*	3.4	4.5*	2.1	3.3*	1.4	2.3*			1.1	1.3*
	Outriggers	Blade	7.1*	7.1*	4.4	4.5*	2.7	3.3*	1.8	2.3*			1.3*	1.3*
	Two-piece blade	Blade	7.1*	7.1*	4.4	4.5*	2.7	3.3*	1.8	2.3*			1.3*	1.3*
-2.0	-	-	5.7	7.1*	2.7	4.4*	1.7	2.8*	1.2	1.4*			1.1	1.2*
	Blade	-	6.8	7.1*	3.2	4.4*	2.0	2.8*	1.4	1.4*			1.2*	1.2*
	Outriggers	Blade	7.1*	7.1*	4.2	4.4*	2.5	2.8*	1.4*	1.4*			1.2*	1.2*
	Two-piece blade	Blade	7.1*	7.1*	4.2	4.4*	2.6	2.8*	1.4*	1.4*			1.2*	1.2*
-3.0	-	-	4.7*	4.7*	2.6*	2.6*							2.2*	2.2*
	Blade	-	4.7*	4.7*	2.6*	2.6*							2.2*	2.2*
	Outriggers	Blade	4.7*	4.7*	2.6*	2.6*							2.2*	2.2*
	Two-piece blade	Blade	4.7*	4.7*	2.6*	2.6*							2.2*	2.2*

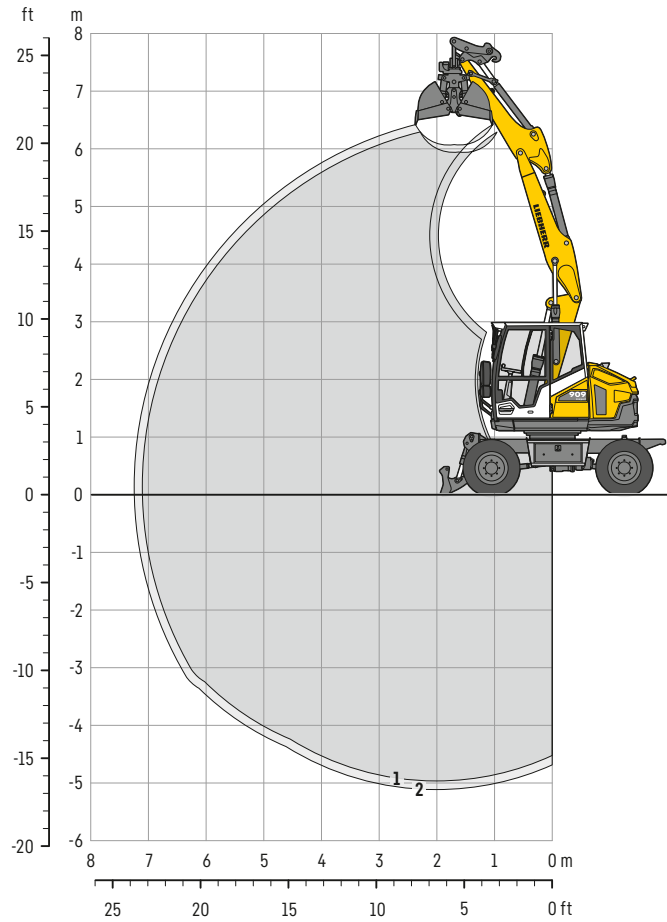
 Height  Can be slewed through 360°  In longitudinal position of undercarriage  Max. reach * Limited by hydr. capacity

The lift capacities on the load hook of the Liebherr quick coupler SWA 33 without attachment are stated in metric tons (t) and are valid on a firm, level supporting surface with blocked oscillating axle. These capacities can be slewed through 360° with the undercarriage in the transverse position. Capacities in the longitudinal position of the undercarriage (+15°) are specified over the steering axle with the stabilizers raised and over the rigid axle with the stabilizers down. The values apply when the adjusting cylinder is in the optimal position. Indicated loads based on the ISO 10567 standard and do not exceed 75% of tipping or 87% of hydraulic capacity, or are limited by the permissible load of the load hook on the quick coupler (max. 5 t). Without the quick coupler, lift capacities will increase by up to 110 kg.

In accordance with the harmonised European Standard EN 474-5, hydraulic excavators used for lifting operations must be equipped with pipe fracture safety valves, an overload warning device, a load hook and a lift capacity chart.

A 909 Compact – Clamshell grab

with two-piece boom 4.40 m



Digging envelope

with quick coupler	1	2
Stick length	m 1.75	1.90
Max. digging depth	m 4.95	5.10
Max. reach at ground level	m 7.10	7.25
Max. dumping height	m 5.95	6.05

Operating weight

The operating weight includes the basic machine with 8 tyres plus intermediate rings, two-piece boom 4.40 m, stick 1.90 m, quick coupler SWA 33 and clamshell grab GM 05B / 0.20 m³ (600 mm without ejector).

Undercarriage versions	Weight (kg)
A 909 Compact Litronic with rear blade	10,400
A 909 Compact Litronic with rear outriggers + front blade	10,900
A 909 Compact Litronic with rear two-piece + front blade	11,000

Clamshell grabs GM 05B Machine stability per ISO 10567* (75 % of tipping capacity)

Width of clamshells mm	Capacity m ³	Weight kg	Stabilizers raised		Rear blade down		Rear outriggers + front blade down		Rear two-piece + front blade down	
			Stick length (m)		Stick length (m)		Stick length (m)		Stick length (m)	
			1.75	1.90	1.75	1.90	1.75	1.90	1.75	1.90
300 ¹⁾	0.10	455	■	■	■	■	■	■	■	■
400 ¹⁾	0.13	495	■	■	■	■	■	■	■	■
600 ¹⁾	0.20	520	■	■	■	■	■	■	■	■
800 ¹⁾	0.27	560	■	■	■	■	■	■	■	■
300 ²⁾	0.10	495	■	■	■	■	■	■	■	■
400 ²⁾	0.13	545	■	■	■	■	■	■	■	■

* Indicated loads are based on ISO 10567 and do not exceed 75 % of tipping or 87 % of hydraulic capacity, max. stick length without quick coupler, lifted 360° on firm with blocked oscillating axle

¹⁾ without ejector

²⁾ with ejector

Max. material weight ■ = ≤ 1.8 t/m³, ■ = ≤ 1.5 t/m³, ▲ = ≤ 1.2 t/m³, - = not authorised

A 909 Compact – Equipments

Clamshell grabs / ditch cleaning buckets / tilt buckets

Clamshell grabs GM 05B Machine stability per ISO 10567* (75 % of tipping capacity)

Width of clamshells mm	Capacity m³	Weight kg	Stabilizers raised	Rear blade down	Rear outriggers + front blade down	Rear two-piece + front blade down
			Stick length (m)	Stick length (m)	Stick length (m)	Stick length (m)
			1.90	1.90	1.90	1.90
Offset two-piece boom 4.50 m						
300 ¹⁾	0.10	455	■	■	■	■
400 ¹⁾	0.13	495	■	■	■	■
600 ¹⁾	0.20	520	■	■	■	■
800 ¹⁾	0.27	560	■	■	■	■
300 ²⁾	0.10	495	■	■	■	■
400 ²⁾	0.13	545	■	■	■	■

* Indicated loads are based on ISO 10567 and do not exceed 75 % of tipping or 87 % of hydraulic capacity, max. stick length without quick coupler, lifted 360° on firm with blocked oscillating axle
¹⁾ without ejector
²⁾ with ejector

Max. material weight ■ = ≤ 1.8 t/m³, ■ = ≤ 1.5 t/m³, ▲ = ≤ 1.2 t/m³, - = not authorised

Ditch cleaning buckets Machine stability per ISO 10567* (75 % of tipping capacity)

Cutting width mm	Capacity ISO 7451 ¹⁾ m³	Weight kg	Stabilizers raised		Rear blade down		Rear outriggers + front blade down		Rear two-piece + front blade down	
			Stick length (m)		Stick length (m)		Stick length (m)		Stick length (m)	
			1.75	1.90	1.75	1.90	1.75	1.90	1.75	1.90
Two-piece boom 4.40 m										
1,200 ²⁾	0.29	345	■	■	■	■	■	■	■	■
1,300 ³⁾	0.28	300	■	■	■	■	■	■	■	■
1,500 ³⁾	0.33	330	■	■	■	■	■	■	■	■
1,500 ⁴⁾	0.33	200	■	■	■	■	■	■	■	■
1,500 ²⁾	0.36	420	■	■	■	■	■	■	■	■
1,700 ³⁾	0.37	390	■	■	■	■	■	■	■	■
Offset two-piece boom 4.50 m										
1,200 ²⁾	0.29	345	-	■	-	■	-	■	-	■
1,300 ³⁾	0.28	300	-	■	-	■	-	■	-	■
1,500 ³⁾	0.33	330	-	■	-	■	-	■	-	■
1,500 ⁴⁾	0.33	200	-	■	-	■	-	■	-	■
1,500 ²⁾	0.36	420	-	■	-	■	-	■	-	■
1,700 ³⁾	0.37	390	-	■	-	■	-	■	-	■

Tilt buckets Machine stability per ISO 10567* (75 % of tipping capacity)

Cutting width mm	Capacity ISO 7451 ¹⁾ m³	Weight kg	Stabilizers raised		Rear blade down		Rear outriggers + front blade down		Rear two-piece + front blade down	
			Stick length (m)		Stick length (m)		Stick length (m)		Stick length (m)	
			1.75	1.90	1.75	1.90	1.75	1.90	1.75	1.90
Two-piece boom 4.40m										
1,400 ²⁾	0.40	420	■	■	■	■	■	■	■	■
1,400 ²⁾	0.50	430	△	△	■	■	■	■	■	■
Offset two-piece boom 4.50m										
1,400 ²⁾	0.40	420	-	■	-	■	-	■	-	■
1,400 ²⁾	0.50	430	-	-	-	△	-	■	-	■

* Indicated loads are based on ISO 10567 and do not exceed 75 % of tipping or 87 % of hydraulic capacity, max. stick length without quick coupler, lifted 360° on firm with blocked oscillating axle

¹⁾ comparable with SAE (heaped)

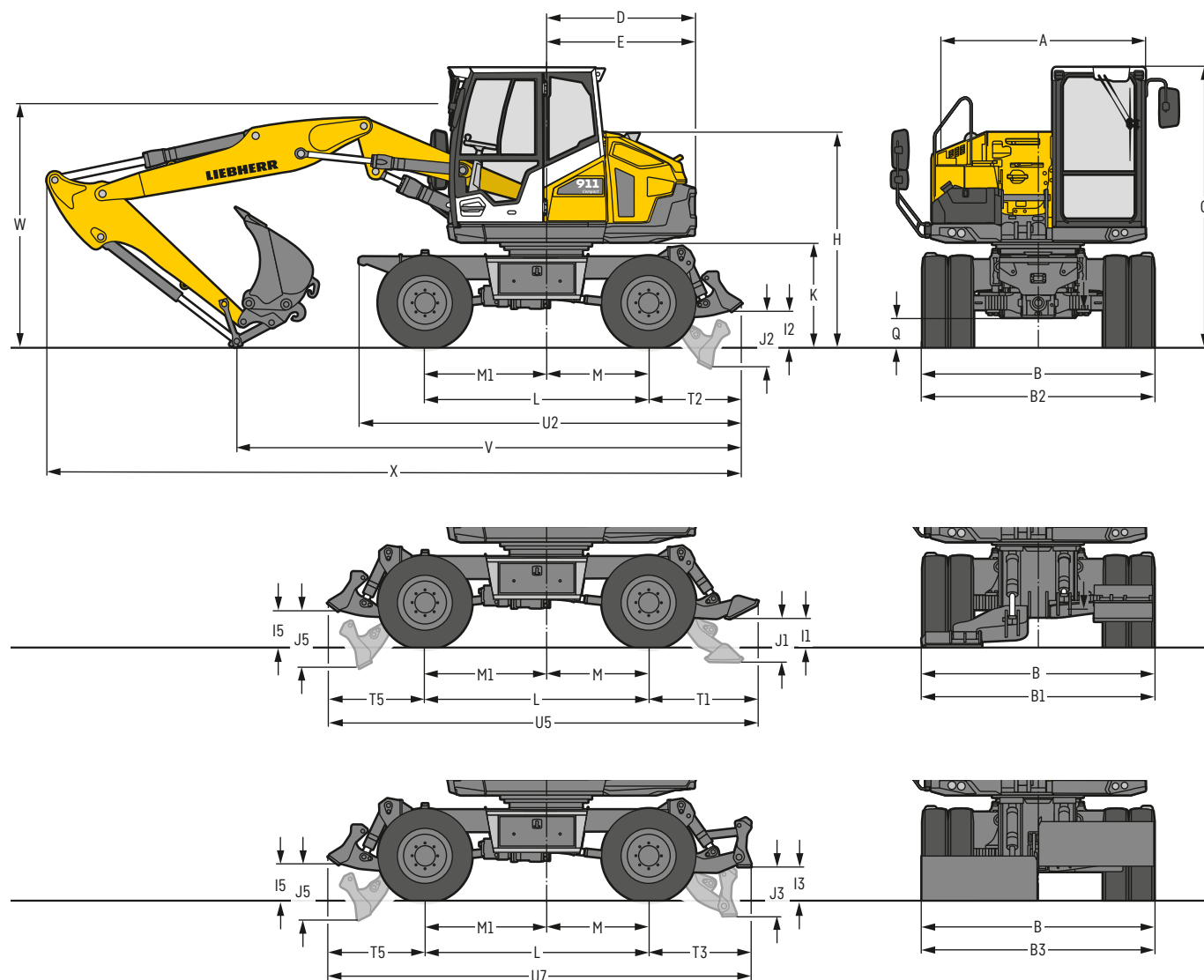
²⁾ with 2 x 50° rotator

³⁾ with 2 x 45° rotator

⁴⁾ rigid ditch cleaning bucket

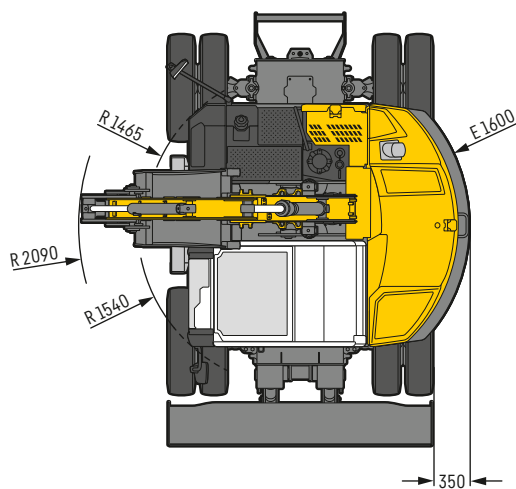
Max. material weight ■ = ≤ 1.8 t/m³, ■ = ≤ 1.5 t/m³, △ = ≤ 1.2 t/m³, - = not authorised

A 911 Compact – Dimensions



	mm
A	2,300
B	2,505
B1	2,505
B2	2,505
B3	2,505
C	3,020
D	1,600
E	1,600
H	2,315
I1	315
I2	395
I3	370
I5	395
J1	465
J2	595
J3	520
J5	595
K	1,120
L	2,400
M	1,100
M1	1,300
Q	320
T1	1,175
T2	990
T3	1,100
T5	1,040
U2	4,100
U5	4,615
U7	4,540

E = Tail radius
Tyres 9.00-20



Min. turning radius on tyres 9.00-20

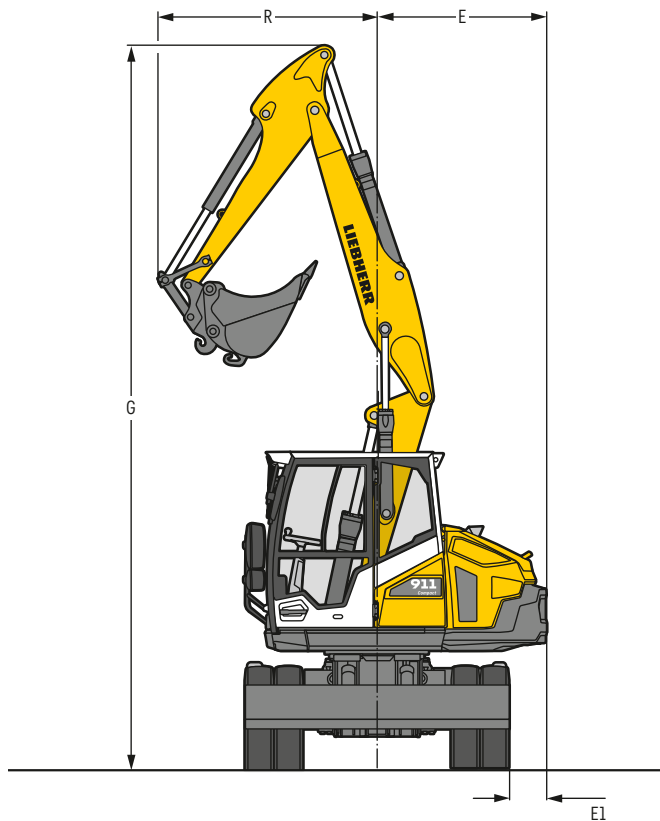
Four wheel steering 4.16 m

Front wheel steering 6.29 m

	Stick	Two-piece boom 4.65 m		
		Rear blade	Rear outriggers + front blade	Rear two-piece + front blade
	m	mm	mm	mm
V	1.90	5,500	5,700	5,600
	2.05	5,450	5,600	5,550
W	1.90	2,600	2,600	2,600
	2.05	2,650	2,650	2,650
X	1.90	7,450	7,650	7,600
	2.05	7,450	7,650	7,600

	Stick	Offset two-piece boom 4.80 m		
		Rear blade	Rear outriggers + front blade	Rear two-piece + front blade
	m	mm	mm	mm
V	2.05	6,250	6,450	6,400
W	2.05	2,700	2,700	2,700
X	2.05	7,250	7,500	7,450

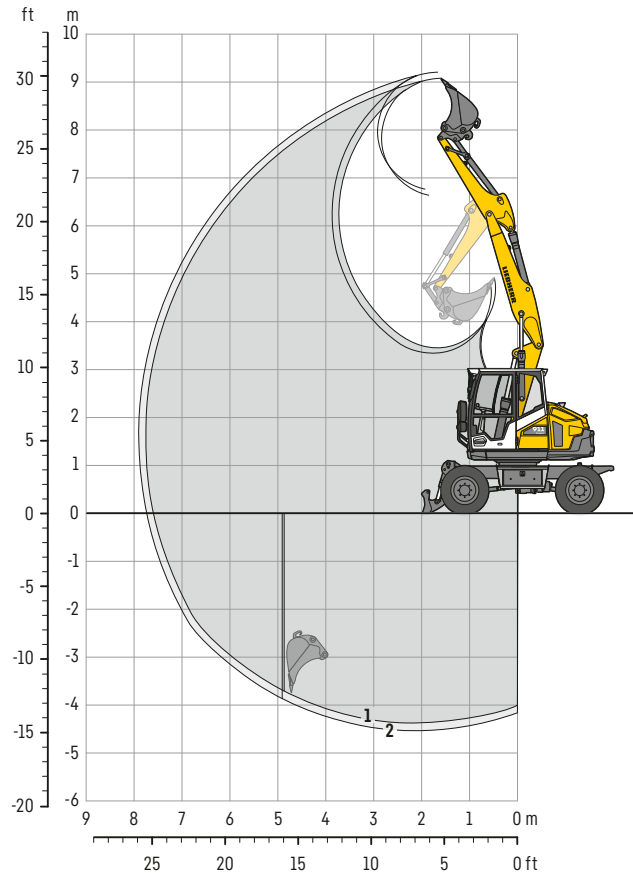
Dimensions are with equipment over steering axle
W = Max. ground clearance including approx. 150 mm piping



Boom	Stick m	G mm	R mm	E mm	E1 mm
Two-piece boom 4.70 m	1.90	6,845	2,000	1,600	350
Two-piece boom 4.70 m	2.05	6,845	2,090	1,600	350

A 911 Compact – Backhoe bucket

with two-piece boom 4.65 m



Digging envelope

with quick coupler	1	2
Stick length	m 1.90	2.05
Max. digging depth	m 4.35	4.50
Max. reach at ground level	m 7.55	7.70
Max. dumping height	m 6.60	6.75
Max. teeth height	m 9.05	9.20
Min. equipment radius	m 2.00	2.09

Digging forces

without quick coupler	1	2
Max. digging force (ISO 6015)	kN 54.8	51.8
	t 5.6	5.3
Max. breakout force (ISO 6015)	kN 70.5	70.5
	t 7.2	7.2

Max. breakout force with ripper bucket

69.4 kN (7.1 t)

Operating weight

The operating weight includes the basic machine with 8 tyres plus intermediate rings, two-piece boom 4.65 m, stick 2.05 m, quick coupler SWA 33 and bucket 750 mm / 0.33 m³.

Undercarriage versions	Weight (kg)
A 911 Compact Litronic with rear blade	11,000
A 911 Compact Litronic with rear outriggers + front blade	11,600
A 911 Compact Litronic with rear two-piece + front blade	11,700

Buckets Machine stability per ISO 10567* (75% of tipping capacity)

Cutting width mm	Capacity ISO 7451 ¹⁾ m³	Weight kg	Stabilizers raised		Rear blade down		Rear outriggers + front blade down		Rear two-piece + front blade down	
			Stick length (m)		Stick length (m)		Stick length (m)		Stick length (m)	
			1.90	2.05	1.90	2.05	1.90	2.05	1.90	2.05
300 ²⁾	0.15	160	■	■	■	■	■	■	■	■
400 ²⁾	0.15	165	■	■	■	■	■	■	■	■
450 ²⁾	0.17	165	■	■	■	■	■	■	■	■
550 ²⁾	0.22	190	■	■	■	■	■	■	■	■
650 ²⁾	0.27	210	■	■	■	■	■	■	■	■
750 ²⁾	0.33	225	■	■	■	■	■	■	■	■
850 ²⁾	0.38	240	■	■	■	■	■	■	■	■
950 ²⁾	0.44	270	■	■	■	■	■	■	■	■
300 ³⁾	0.15	155	■	■	■	■	■	■	■	■
400 ³⁾	0.16	155	■	■	■	■	■	■	■	■
450 ³⁾	0.18	160	■	■	■	■	■	■	■	■
550 ³⁾	0.24	185	■	■	■	■	■	■	■	■
650 ³⁾	0.30	200	■	■	■	■	■	■	■	■
750 ³⁾	0.35	220	■	■	■	■	■	■	■	■
850 ³⁾	0.42	235	■	■	■	■	■	■	■	■
950 ³⁾	0.48	245	■	■	■	■	■	■	■	■

* Indicated loads are based on ISO 10567 and do not exceed 75% of tipping or 87% of hydraulic capacity, max. stick length without quick coupler, lifted 360° on firm with blocked oscillating axle

¹⁾ comparable with SAE (heaped)

²⁾ Bucket with teeth (also available in HD version)

³⁾ Bucket with cutting edge (also available in HD version)

Buckets up to 400 mm cutting width with limited digging depth

Max. material weight ■ = ≤ 1.8 t/m³, ■ = ≤ 1.5 t/m³, ▲ = ≤ 1.2 t/m³, - = not authorised

A 911 Compact – Lift capacities

with two-piece boom 4.65 m

Stick 1.90 m

m	Undercarriage stabilized		2.0m		3.0m		4.0m		5.0m		6.0m		m
	rear	front											
7.0	-	-			2.7*	2.7*	2.1*	2.1*			2.1*	2.1*	4.0
	Blade	-			2.7*	2.7*	2.1*	2.1*			2.1*	2.1*	
	Outriggers	Blade			2.7*	2.7*	2.1*	2.1*			2.1*	2.1*	
	Two-piece blade	Blade			2.7*	2.7*	2.1*	2.1*			2.1*	2.1*	
6.0	-	-			2.6*	2.6*	2.6*	2.6*	2.1*	2.1*		1.8*	5.1
	Blade	-			2.6*	2.6*	2.6*	2.6*	2.1*	2.1*		1.8*	
	Outriggers	Blade			2.6*	2.6*	2.6*	2.6*	2.1*	2.1*		1.8*	
	Two-piece blade	Blade			2.6*	2.6*	2.6*	2.6*	2.1*	2.1*		1.8*	
5.0	-	-			2.7*	2.7*	2.8*	2.8*	2.1	2.6*		1.6	5.9
	Blade	-			2.7*	2.7*	2.8*	2.8*	2.4	2.6*		1.8*	
	Outriggers	Blade			2.7*	2.7*	2.8*	2.8*	2.6*	2.6*		1.8*	
	Two-piece blade	Blade			2.7*	2.7*	2.8*	2.8*	2.6*	2.6*		1.8*	
4.0	-	-	3.6*	3.6*	3.5*	3.5*	3.0	3.4*	2.1	2.9*	1.5	2.2	6.3
	Blade	-	3.6*	3.6*	3.5*	3.5*	3.3	3.4*	2.4	2.9*	1.7	2.4*	
	Outriggers	Blade	3.6*	3.6*	3.5*	3.5*	3.4*	3.4*	2.7	2.9*	2.0	2.4*	
	Two-piece blade	Blade	3.6*	3.6*	3.5*	3.5*	3.4*	3.4*	2.8	2.9*	2.1	2.4*	
3.0	-	-	6.2*	6.2*	4.4	5.0*	2.9	3.7*	2.1	2.9	1.5	2.2	6.6
	Blade	-	6.2*	6.2*	4.8	5.0*	3.2	3.7*	2.3	3.0*	1.7	2.5*	
	Outriggers	Blade	6.2*	6.2*	5.0*	5.0*	3.7	3.7*	2.7	3.0*	2.0	2.5*	
	Two-piece blade	Blade	6.2*	6.2*	5.0*	5.0*	3.7*	3.7*	2.8	3.0*	2.1	2.5*	
2.0	-	-	6.7*	6.7*	4.3	5.4*	2.9	3.9	2.1	2.9	1.5	2.2	6.8
	Blade	-	6.7*	6.7*	4.7	5.4*	3.2	3.9*	2.3	3.1*	1.7	2.5*	
	Outriggers	Blade	6.7*	6.7*	5.4*	5.4*	3.6	3.9*	2.7	3.1*	2.0	2.5*	
	Two-piece blade	Blade	6.7*	6.7*	5.4*	5.4*	3.7	3.9*	2.8	3.1*	2.1	2.5*	
1.0	-	-	7.2*	7.2*	4.3	5.4*	2.9	3.9	2.0	2.9	1.4	2.1	6.7
	Blade	-	7.2*	7.2*	4.7	5.4*	3.2	3.9*	2.2	3.1*	1.6	2.5*	
	Outriggers	Blade	7.2*	7.2*	5.4	5.4*	3.6	3.9*	2.7	3.1*	1.9	2.5*	
	Two-piece blade	Blade	7.2*	7.2*	5.4*	5.4*	3.7	3.9*	2.8	3.1*	2.0	2.5*	
0	-	-	8.1*	8.1*	4.2	5.4*	2.7	3.9	1.9	2.8	1.4	2.1	6.6
	Blade	-	8.1*	8.1*	4.8	5.4*	3.1	4.0*	2.1	3.1*	1.6	2.5*	
	Outriggers	Blade	8.1*	8.1*	5.4	5.4*	3.7	4.0*	2.6	3.1*	1.9	2.5*	
	Two-piece blade	Blade	8.1*	8.1*	5.4*	5.4*	3.8	4.0*	2.7	3.1*	2.0	2.5*	
-1.0	-	-	8.1	8.6*	4.1	5.5*	2.6	4.0	1.8	2.7	1.3	2.0	6.2
	Blade	-	8.6*	8.6*	4.6	5.5*	3.0	4.0*	2.0	3.1*	1.5	2.1*	
	Outriggers	Blade	8.6*	8.6*	5.5*	5.5*	3.6	4.0*	2.5	3.1*	1.8	2.1*	
	Two-piece blade	Blade	8.6*	8.6*	5.5*	5.5*	3.7	4.0*	2.6	3.1*	1.9	2.1*	
-2.0	-	-	8.1	8.7*	4.0	5.6*	2.5	3.9	1.7	2.5*		1.4	5.7
	Blade	-	8.7*	8.7*	4.6	5.6*	2.8	3.9*	2.0	2.5*		1.4*	
	Outriggers	Blade	8.7*	8.7*	5.6*	5.6*	3.5	3.9*	2.4	2.5*		1.4*	
	Two-piece blade	Blade	8.7*	8.7*	5.6*	5.6*	3.6	3.9*	2.5	2.5*		1.4*	
-3.0	-	-	7.2*	7.2*	3.9	4.3*	2.4	2.5*				2.1*	4.3
	Blade	-	7.2*	7.2*	4.3*	4.3*	2.5*	2.5*				2.1*	
	Outriggers	Blade	7.2*	7.2*	4.3*	4.3*	2.5*	2.5*				2.1*	
	Two-piece blade	Blade	7.2*	7.2*	4.3*	4.3*	2.5*	2.5*				2.1*	

 Height  Can be slewed through 360°  In longitudinal position of undercarriage  Max. reach * Limited by hydr. capacity

The lift capacities on the load hook of the Liebherr quick coupler SWA 33 without attachment are stated in metric tons (t) and are valid on a firm, level supporting surface with blocked oscillating axle. These capacities can be slewed through 360° with the undercarriage in the transverse position. Capacities in the longitudinal position of the undercarriage (+15°) are specified over the steering axle with the stabilizers raised and over the rigid axle with the stabilizers down. The values apply when the adjusting cylinder is in the optimal position. Indicated loads based on the ISO 10567 standard and do not exceed 75% of tipping or 87% of hydraulic capacity, or are limited by the permissible load of the load hook on the quick coupler (max. 5 t). Without the quick coupler, lift capacities will increase by up to 110 kg.

In accordance with the harmonised European Standard EN 474-5, hydraulic excavators used for lifting operations must be equipped with pipe fracture safety valves, an overload warning device, a load hook and a lift capacity chart.

A 911 Compact – Lift capacities

with two-piece boom 4.65 m

Stick 2.05 m

m	Undercarriage stabilized		2.0m		3.0m		4.0m		5.0m		6.0m		m	
	rear	front												
8.0	-	-											2.5*	2.5*
	Blade	-											2.5*	2.5*
	Outriggers	Blade											2.5*	2.5*
	Two-piece blade	Blade											2.5*	2.5*
7.0	-	-			2.6*	2.6*	2.2*	2.2*					1.9*	1.9*
	Blade	-			2.6*	2.6*	2.2*	2.2*					1.9*	1.9*
	Outriggers	Blade			2.6*	2.6*	2.2*	2.2*					1.9*	1.9*
	Two-piece blade	Blade			2.6*	2.6*	2.2*	2.2*					1.9*	1.9*
6.0	-	-					2.5*	2.5*	2.1	2.1*			1.7*	1.7*
	Blade	-					2.5*	2.5*	2.1*	2.1*			1.7*	1.7*
	Outriggers	Blade					2.5*	2.5*	2.1*	2.1*			1.7*	1.7*
	Two-piece blade	Blade					2.5*	2.5*	2.1*	2.1*			1.7*	1.7*
5.0	-	-			2.4*	2.4*	2.6*	2.6*	2.1	2.5*	1.5	1.7*	1.5	1.6*
	Blade	-			2.4*	2.4*	2.6*	2.6*	2.4	2.5*	1.7*	1.7*	1.6*	1.6*
	Outriggers	Blade			2.4*	2.4*	2.6*	2.6*	2.5*	2.5*	1.7*	1.7*	1.6*	1.6*
	Two-piece blade	Blade			2.4*	2.4*	2.6*	2.6*	2.5*	2.5*	1.7*	1.7*	1.6*	1.6*
4.0	-	-	2.8*	2.8*	3.0*	3.0*	3.0	3.0*	2.2	2.9*	1.5	2.2	1.3	1.6*
	Blade	-	2.8*	2.8*	3.0*	3.0*	3.0*	3.0*	2.4	2.9*	1.7	2.4*	1.5	1.6*
	Outriggers	Blade	2.8*	2.8*	3.0*	3.0*	3.0*	3.0*	2.7	2.9*	2.0	2.4*	1.6*	1.6*
	Two-piece blade	Blade	2.8*	2.8*	3.0*	3.0*	3.0*	3.0*	2.8	2.9*	2.1	2.4*	1.6*	1.6*
3.0	-	-	6.1*	6.1*	4.4	4.9*	2.9	3.7*	2.1	2.9	1.5	2.2	1.2	1.6*
	Blade	-	6.1*	6.1*	4.8	4.9*	3.2	3.7*	2.3	3.0*	1.7	2.5*	1.3	1.6*
	Outriggers	Blade	6.1*	6.1*	4.9*	4.9*	3.7*	3.7*	2.7	3.0*	2.0	2.5*	1.6	1.6*
	Two-piece blade	Blade	6.1*	6.1*	4.9*	4.9*	3.7*	3.7*	2.8	3.0*	2.1	2.5*	1.6*	1.6*
2.0	-	-	6.7*	6.7*	4.3	5.3*	2.9	3.9*	2.1	2.9	1.5	2.2	1.1	1.7
	Blade	-	6.7*	6.7*	4.7	5.3*	3.2	3.9*	2.3	3.1*	1.7	2.5*	1.3	1.7*
	Outriggers	Blade	6.7*	6.7*	5.3*	5.3*	3.6	3.9*	2.7	3.1*	2.0	2.5*	1.5	1.7*
	Two-piece blade	Blade	6.7*	6.7*	5.3*	5.3*	3.7	3.9*	2.8	3.1*	2.1	2.5*	1.6	1.7*
1.0	-	-	7.1*	7.1*	4.3	5.4*	2.9	3.9	2.0	2.9	1.4	2.1	1.1	1.7
	Blade	-	7.1*	7.1*	4.7	5.4*	3.1	3.9*	2.3	3.1*	1.6	2.5*	1.2	1.8*
	Outriggers	Blade	7.1*	7.1*	5.4	5.4*	3.6	3.9*	2.7	3.1*	2.0	2.5*	1.5	1.8*
	Two-piece blade	Blade	7.1*	7.1*	5.4*	5.4*	3.7	3.9*	2.8	3.1*	2.0	2.5*	1.6	1.8*
0	-	-	8.0*	8.0*	4.2	5.4*	2.8	3.9	1.9	2.9	1.4	2.1	1.1	1.7
	Blade	-	8.0*	8.0*	4.8	5.4*	3.1	4.0*	2.2	3.1*	1.6	2.5*	1.3	1.9*
	Outriggers	Blade	8.0*	8.0*	5.4	5.4*	3.6	4.0*	2.6	3.1*	1.9	2.5*	1.6	1.9*
	Two-piece blade	Blade	8.0*	8.0*	5.4*	5.4*	3.7	4.0*	2.7	3.1*	2.0	2.5*	1.6	1.9*
-1.0	-	-	8.2	8.6*	4.1	5.5*	2.7	4.0	1.8	2.8	1.3	2.0	1.2	1.7*
	Blade	-	8.6*	8.6*	4.7	5.5*	3.0	4.0*	2.1	3.1*	1.5	2.2*	1.4	1.7*
	Outriggers	Blade	8.6*	8.6*	5.5*	5.5*	3.6	4.0*	2.5	3.1*	1.9	2.2*	1.7	1.7*
	Two-piece blade	Blade	8.6*	8.6*	5.5*	5.5*	3.8	4.0*	2.6	3.1*	1.9	2.2*	1.7*	1.7*
-2.0	-	-	8.1	8.7*	4.0	5.6*	2.5	3.9	1.8	2.7			1.4	1.4*
	Blade	-	8.7*	8.7*	4.6	5.6*	2.9	4.0*	2.0	2.7*			1.4*	1.4*
	Outriggers	Blade	8.7*	8.7*	5.6*	5.6*	3.5	4.0*	2.4	2.7*			1.4*	1.4*
	Two-piece blade	Blade	8.7*	8.7*	5.6*	5.6*	3.6	4.0*	2.5	2.7*			1.4*	1.4*
-3.0	-	-	7.6*	7.6*	3.9	4.7*	2.4	2.9*					1.9*	1.9*
	Blade	-	7.6*	7.6*	4.4	4.7*	2.8	2.9*					1.9*	1.9*
	Outriggers	Blade	7.6*	7.6*	4.7*	4.7*	2.9*	2.9*					1.9*	1.9*
	Two-piece blade	Blade	7.6*	7.6*	4.7*	4.7*	2.9*	2.9*					1.9*	1.9*

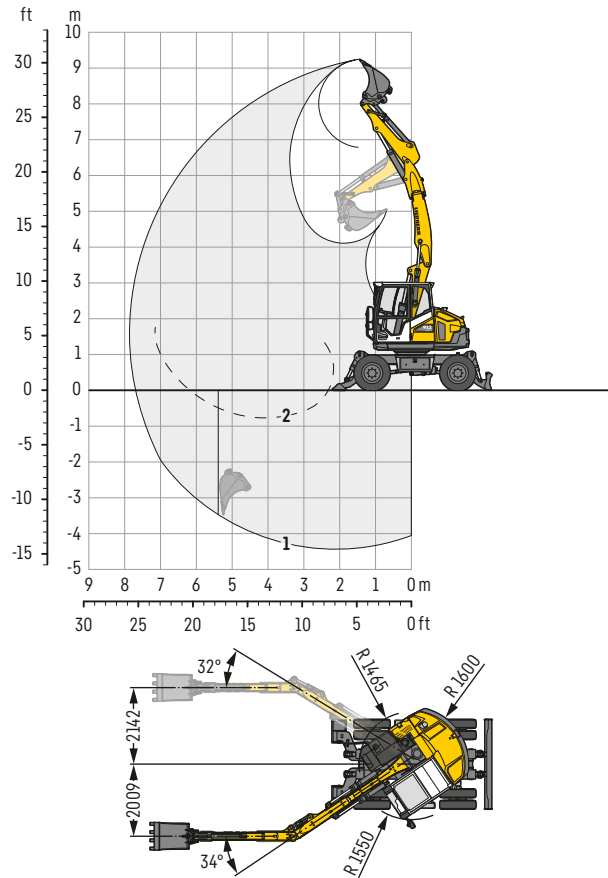
 Height  Can be slewed through 360°  In longitudinal position of undercarriage  Max. reach * Limited by hydr. capacity

The lift capacities on the load hook of the Liebherr quick coupler SWA 33 without attachment are stated in metric tons (t) and are valid on a firm, level supporting surface with blocked oscillating axle. These capacities can be slewed through 360° with the undercarriage in the transverse position. Capacities in the longitudinal position of the undercarriage (±15°) are specified over the steering axle with the stabilizers raised and over the rigid axle with the stabilizers down. The values apply when the adjusting cylinder is in the optimal position. Indicated loads based on the ISO 10567 standard and do not exceed 75% of tipping or 87% of hydraulic capacity, or are limited by the permissible load of the load hook on the quick coupler (max. 5 t). Without the quick coupler, lift capacities will increase by up to 110 kg.

In accordance with the harmonised European Standard EN 474-5, hydraulic excavators used for lifting operations must be equipped with pipe fracture safety valves, an overload warning device, a load hook and a lift capacity chart.

A 911 Compact – Backhoe bucket

with offset two-piece boom 4.80 m



Digging envelope

with quick coupler		1
Stick length	m	2.05
Max. digging depth	m	4.45
Max. reach at ground level	m	7.70
Max. dumping height	m	6.75
Max. teeth height	m	9.20
Min. equipment radius	m	2.12

1 with stick 2.05 m
with set straight boom

2 with stick 2.05 m
at max. equipment offset with vertical ditch walls

Digging forces

without quick coupler		1
Max. digging force (ISO 6015)	kN	45.8
	t	4.7
Max. breakout force (ISO 6015)	kN	70.5
	t	7.2

Max. breakout force with ripper bucket

69.4 kN (7.1 t)

Operating weight

The operating weight includes the basic machine with 8 tyres plus intermediate rings, offset two-piece boom 4.80 m, stick 2.05 m, quick coupler SWA 33 and bucket 750 mm / 0.33 m³.

Undercarriage versions	Weight (kg)
A 911 Compact Litronic with rear blade	11,200
A 911 Compact Litronic with rear outriggers + front blade	11,900
A 911 Compact Litronic with rear two-piece + front blade	12,000

Buckets Machine stability per ISO 10567* (75% of tipping capacity)

Cutting width mm	Capacity ISO 7451 ¹⁾ m³	Weight kg	Stabilizers raised	Rear blade down	Rear outriggers + front blade down	Rear two-piece + front blade down
			Stick length (m)	Stick length (m)	Stick length (m)	Stick length (m)
			2.05	2.05	2.05	2.05
300 ²⁾	0.15	160	■	■	■	■
400 ²⁾	0.15	165	■	■	■	■
450 ²⁾	0.17	165	■	■	■	■
550 ²⁾	0.22	190	■	■	■	■
650 ²⁾	0.27	210	■	■	■	■
750 ²⁾	0.33	225	■	■	■	■
850 ²⁾	0.38	240	■	■	■	■
950 ²⁾	0.44	270	■	■	■	■
300 ³⁾	0.15	155	■	■	■	■
400 ³⁾	0.16	155	■	■	■	■
450 ³⁾	0.18	160	■	■	■	■
550 ³⁾	0.24	185	■	■	■	■
650 ³⁾	0.30	200	■	■	■	■
750 ³⁾	0.35	220	■	■	■	■
850 ³⁾	0.42	235	■	■	■	■
950 ³⁾	0.48	245	■	■	■	■

* Indicated loads are based on ISO 10567 and do not exceed 75% of tipping or 87% of hydraulic capacity, max. stick length without quick coupler, lifted 360° on firm with blocked oscillating axle

¹⁾ comparable with SAE (heaped)

²⁾ Bucket with teeth (also available in HD version)

³⁾ Bucket with cutting edge (also available in HD version)








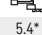






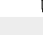
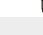


Buckets up to 400 mm cutting width with limited digging depth

Max. material weight ■ = ≤ 1.8 t/m³, ■ = ≤ 1.5 t/m³, ▲ = ≤ 1.2 t/m³, - = not authorised

A 911 Compact – Lift capacities

with offset two-piece boom 4.80 m

Stick 2.05 m

 m	Undercarriage stabilized		 2.0m		 3.0m		 4.0m		 5.0m		 6.0m				m
	rear	front													
8.0	-	-	5.4*	5.4*									5.2*	5.2*	2.2
	Blade	-	5.4*	5.4*									5.2*	5.2*	
	Outriggers	Blade	5.4*	5.4*									5.2*	5.2*	
	Two-piece blade	Blade	5.4*	5.4*									5.2*	5.2*	
7.0	-	-			4.0*	4.0*	3.0	3.3*					2.8	3.3*	4.1
	Blade	-			4.0*	4.0*	3.3	3.3*					3.2	3.3*	
	Outriggers	Blade			4.0*	4.0*	3.3*	3.3*					3.3*	3.3*	
	Two-piece blade	Blade			4.0*	4.0*	3.3*	3.3*					3.3*	3.3*	
6.0	-	-			3.9*	3.9*	3.0	3.3*	2.0	2.8*			1.9	2.8*	5.2
	Blade	-			3.9*	3.9*	3.3*	3.3*	2.3	2.8*			2.1	2.8*	
	Outriggers	Blade			3.9*	3.9*	3.3*	3.3*	2.7	2.8*			2.5	2.8*	
	Two-piece blade	Blade			3.9*	3.9*	3.3*	3.3*	2.8	2.8*			2.6	2.8*	
5.0	-	-			4.1*	4.1*	3.0	3.3*	2.1	2.8*			1.5	2.2	5.9
	Blade	-			4.1*	4.1*	3.3	3.3*	2.3	2.8*			1.7	2.5*	
	Outriggers	Blade			4.1*	4.1*	3.3*	3.3*	2.7	2.8*			2.0	2.5*	
	Two-piece blade	Blade			4.1*	4.1*	3.3*	3.3*	2.8	2.8*			2.1	2.5*	
4.0	-	-			4.5	4.5*	2.9	3.5*	2.1	2.9	1.4	2.2	1.3	1.9	6.4
	Blade	-			4.5*	4.5*	3.2	3.5*	2.3	2.9*	1.6	2.5*	1.4	2.3*	
	Outriggers	Blade			4.5*	4.5*	3.5*	3.5*	2.7	2.9*	2.0	2.5*	1.7	2.3*	
	Two-piece blade	Blade			4.5*	4.5*	3.5*	3.5*	2.8	2.9*	2.0	2.5*	1.8	2.3*	
3.0	-	-			4.3	4.4*	2.9	3.7*	2.1	2.8	1.4	2.1	1.1	1.7	6.7
	Blade	-			4.4*	4.4*	3.1	3.7*	2.3	3.0*	1.6	2.5*	1.3	2.2*	
	Outriggers	Blade			4.4*	4.4*	3.6	3.7*	2.6	3.0*	1.9	2.5*	1.6	2.2*	
	Two-piece blade	Blade			4.4*	4.4*	3.7	3.7*	2.7	3.0*	2.0	2.5*	1.6	2.2*	
2.0	-	-	5.3*	5.3*	4.2	4.8*	2.8	3.8	2.0	2.8	1.4	2.1	1.1	1.6	6.8
	Blade	-	5.3*	5.3*	4.6	4.8*	3.1	3.8*	2.3	3.0*	1.6	2.4*	1.2	2.0*	
	Outriggers	Blade	5.3*	5.3*	4.8*	4.8*	3.5	3.8*	2.6	3.0*	1.9	2.4*	1.5	2.0*	
	Two-piece blade	Blade	5.3*	5.3*	4.8*	4.8*	3.6	3.8*	2.7	3.0*	2.0	2.4*	1.5	2.0*	
1.0	-	-	7.3*	7.3*	4.2	5.2*	2.8	3.8	1.9	2.8	1.3	2.0	1.0	1.6	6.8
	Blade	-	7.3*	7.3*	4.6	5.2*	3.1	3.8*	2.2	3.0*	1.5	2.4*	1.2	1.9*	
	Outriggers	Blade	7.3*	7.3*	5.2*	5.2*	3.5	3.8*	2.6	3.0*	1.8	2.4*	1.5	1.9*	
	Two-piece blade	Blade	7.3*	7.3*	5.2*	5.2*	3.6	3.8*	2.7	3.0*	1.9	2.4*	1.5	1.9*	
0	-	-	7.9*	7.9*	4.2	5.2*	2.7	3.8	1.8	2.7	1.3	2.0	1.0	1.7	6.6
	Blade	-	7.9*	7.9*	4.6	5.2*	3.0	3.8*	2.0	3.0*	1.5	2.4*	1.2	1.7*	
	Outriggers	Blade	7.9*	7.9*	5.2*	5.2*	3.6	3.8*	2.5	3.0*	1.8	2.4*	1.5	1.7*	
	Two-piece blade	Blade	7.9*	7.9*	5.2*	5.2*	3.6	3.8*	2.6	3.0*	1.9	2.4*	1.6	1.7*	
-1.0	-	-	8.0	8.3*	4.0	5.3*	2.5	3.9	1.7	2.6	1.2	1.9	1.1	1.5*	6.3
	Blade	-	8.3*	8.3*	4.6	5.3*	2.8	3.9*	1.9	3.0*	1.4	2.0*	1.3	1.5*	
	Outriggers	Blade	8.3*	8.3*	5.3*	5.3*	3.5	3.9*	2.4	3.0*	1.7	2.0*	1.5*	1.5*	
	Two-piece blade	Blade	8.3*	8.3*	5.3*	5.3*	3.6	3.9*	2.5	3.0*	1.8	2.0*	1.5*	1.5*	
-2.0	-	-	7.9	8.6*	3.8	5.4*	2.3	3.7*	1.6	2.4*			1.3*	1.3*	5.7
	Blade	-	8.6*	8.6*	4.4	5.4*	2.7	3.7*	1.9	2.4*			1.3*	1.3*	
	Outriggers	Blade	8.6*	8.6*	5.4*	5.4*	3.3	3.7*	2.3	2.4*			1.3*	1.3*	
	Two-piece blade	Blade	8.6*	8.6*	5.4*	5.4*	3.5	3.7*	2.4	2.4*			1.3*	1.3*	
-3.0	-	-	6.9*	6.9*	3.6	4.1*	2.3	2.3*					1.9*	1.9*	4.3
	Blade	-	6.9*	6.9*	4.1*	4.1*	2.3*	2.3*					1.9*	1.9*	
	Outriggers	Blade	6.9*	6.9*	4.1*	4.1*	2.3*	2.3*					1.9*	1.9*	
	Two-piece blade	Blade	6.9*	6.9*	4.1*	4.1*	2.3*	2.3*					1.9*	1.9*	

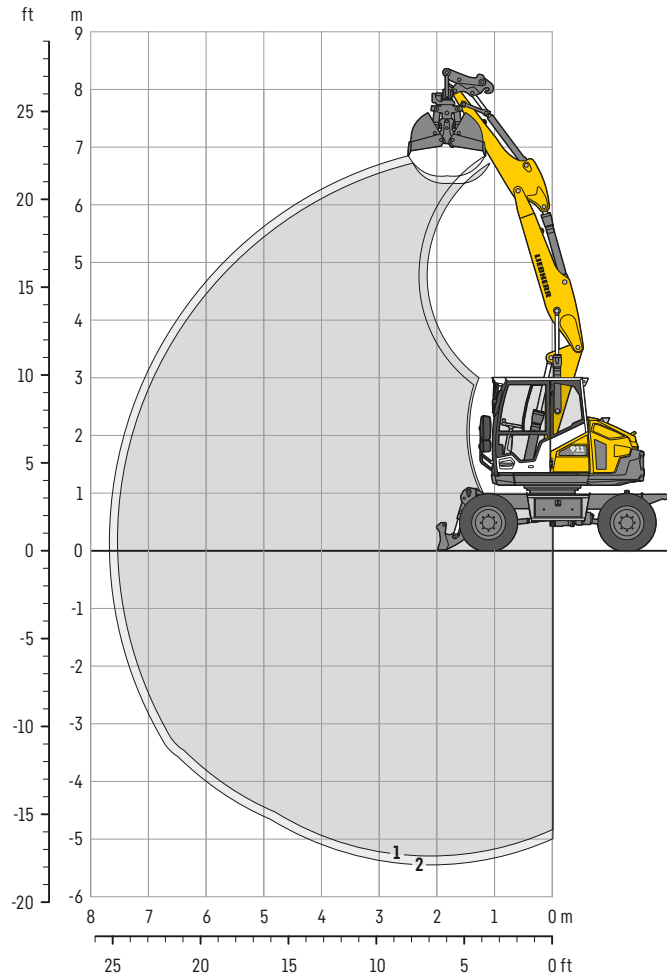
 Height  Can be slewed through 360°  In longitudinal position of undercarriage  Max. reach * Limited by hydr. capacity

The lift capacities on the load hook of the Liebherr quick coupler SWA 33 without attachment are stated in metric tons (t) and are valid on a firm, level supporting surface with blocked oscillating axle. These capacities can be slewed through 360° with the undercarriage in the transverse position. Capacities in the longitudinal position of the undercarriage (±15°) are specified over the steering axle with the stabilizers raised and over the rigid axle with the stabilizers down. The values apply when the adjusting cylinder is in the optimal position. Indicated loads based on the ISO 10567 standard and do not exceed 75% of tipping or 87% of hydraulic capacity, or are limited by the permissible load of the load hook on the quick coupler (max. 5 t). Without the quick coupler, lift capacities will increase by up to 110 kg.

In accordance with the harmonised European Standard EN 474-5, hydraulic excavators used for lifting operations must be equipped with pipe fracture safety valves, an overload warning device, a load hook and a lift capacity chart.

A 911 Compact – Clamshell grab

with two-piece boom 4.65 m



Digging envelope

with quick coupler	1	2
Stick length	m 1.90	2.05
Max. digging depth	m 5.25	5.40
Max. reach at ground level	m 7.50	7.65
Max. dumping height	m 6.35	6.50

Operating weight

The operating weight includes the basic machine with 8 tyres plus intermediate rings, two-piece boom 4.65 m, stick 2.05 m, quick coupler SWA 33 and clamshell grab GM 05B / 0.20 m³ (600 mm without ejector).

Undercarriage versions	Weight (kg)
A 911 Compact Litronic with rear blade	11,500
A 911 Compact Litronic with rear outriggers + front blade	12,100
A 911 Compact Litronic with rear two-piece + front blade	12,200

Clamshell grabs GM 05B Machine stability per ISO 10567* (75% of tipping capacity)

Width of clamshells mm	Capacity m ³	Weight kg	Stabilizers raised		Rear blade down		Rear outriggers + front blade down		Rear two-piece + front blade down	
			Stick length (m)		Stick length (m)		Stick length (m)		Stick length (m)	
			1.90	2.05	1.90	2.05	1.90	2.05	1.90	2.05
300 ¹⁾	0.10	455	■	■	■	■	■	■	■	■
400 ¹⁾	0.13	495	■	■	■	■	■	■	■	■
600 ¹⁾	0.20	520	■	■	■	■	■	■	■	■
800 ¹⁾	0.27	560	■	■	■	■	■	■	■	■
300 ²⁾	0.10	495	■	■	■	■	■	■	■	■
400 ²⁾	0.13	545	■	■	■	■	■	■	■	■

* Indicated loads are based on ISO 10567 and do not exceed 75% of tipping or 87% of hydraulic capacity, max. stick length without quick coupler, lifted 360° on firm with blocked oscillating axle

¹⁾ without ejector

²⁾ with ejector

Max. material weight ■ = ≤ 1.8 t/m³, ■ = ≤ 1.5 t/m³, ▲ = ≤ 1.2 t/m³, – = not authorised

A 911 Compact – Equipments

Clamshell grabs / ditch cleaning buckets / tilt buckets

Clamshell grabs GM 05B Machine stability per ISO 10567* (75 % of tipping capacity)

Width of clamshells mm	Capacity m³	Weight kg	Stabilizers raised	Rear blade down	Rear outriggers + front blade down	Rear two-piece + front blade down
			Stick length (m)	Stick length (m)	Stick length (m)	Stick length (m)
			2.05	2.05	2.05	2.05
Offset two-piece boom 4.80 m						
300 ¹⁾	0.10	455	■	■	■	■
400 ¹⁾	0.13	495	■	■	■	■
600 ¹⁾	0.20	520	■	■	■	■
800 ¹⁾	0.27	560	■	■	■	■
300 ²⁾	0.10	495	■	■	■	■
400 ²⁾	0.13	545	■	■	■	■

* Indicated loads are based on ISO 10567 and do not exceed 75 % of tipping or 87 % of hydraulic capacity, max. stick length without quick coupler, lifted 360° on firm with blocked oscillating axle
¹⁾ without ejector

²⁾ with ejector

Max. material weight ■ = ≤ 1.8t/m³, ■ = ≤ 1.5t/m³, △ = ≤ 1.2t/m³, - = not authorised

Ditch cleaning buckets Machine stability per ISO 10567* (75 % of tipping capacity)

Cutting width mm	Capacity ISO 7451 ¹⁾ m³	Weight kg	Stabilizers raised		Rear blade down		Rear outriggers + front blade down		Rear two-piece + front blade down	
			Stick length (m)		Stick length (m)		Stick length (m)		Stick length (m)	
			1.90	2.05	1.90	2.05	1.90	2.05	1.90	2.05
Two-piece boom 4.65 m										
1,200 ²⁾	0.29	345	■	■	■	■	■	■	■	■
1,300 ³⁾	0.28	300	■	■	■	■	■	■	■	■
1,500 ³⁾	0.33	330	■	■	■	■	■	■	■	■
1,500 ⁴⁾	0.33	200	■	■	■	■	■	■	■	■
1,500 ²⁾	0.36	420	■	■	■	■	■	■	■	■
1,700 ³⁾	0.37	390	■	■	■	■	■	■	■	■
1,700 ²⁾	0.41	440	■	■	■	■	■	■	■	■
2,000 ⁴⁾	0.45	270	■	■	■	■	■	■	■	■
Offset two-piece boom 4.80 m										
1,200 ²⁾	0.29	345	-	■	-	■	-	■	-	■
1,300 ³⁾	0.28	300	-	■	-	■	-	■	-	■
1,500 ³⁾	0.33	330	-	■	-	■	-	■	-	■
1,500 ⁴⁾	0.33	200	-	■	-	■	-	■	-	■
1,500 ²⁾	0.36	420	-	■	-	■	-	■	-	■
1,700 ³⁾	0.37	390	-	■	-	■	-	■	-	■
1,700 ²⁾	0.41	440	-	■	-	■	-	■	-	■
2,000 ⁴⁾	0.45	270	-	■	-	■	-	■	-	■

Tilt buckets Machine stability per ISO 10567* (75 % of tipping capacity)

Cutting width mm	Capacity ISO 7451 ¹⁾ m³	Weight kg	Stabilizers raised		Rear blade down		Rear outriggers + front blade down		Rear two-piece + front blade down	
			Stick length (m)		Stick length (m)		Stick length (m)		Stick length (m)	
			1.90	2.05	1.90	2.05	1.90	2.05	1.90	2.05
Two-piece boom 4.65 m										
1,400 ²⁾	0.40	420	■	■	■	■	■	■	■	■
1,400 ²⁾	0.50	430	■	■	■	■	■	■	■	■
Offset two-piece boom 4.80 m										
1,400 ²⁾	0.40	420	-	■	-	■	-	■	-	■
1,400 ²⁾	0.50	430	-	■	-	■	-	■	-	■

* Indicated loads are based on ISO 10567 and do not exceed 75 % of tipping or 87 % of hydraulic capacity, max. stick length without quick coupler, lifted 360° on firm with blocked oscillating axle

¹⁾ comparable with SAE (heaped)

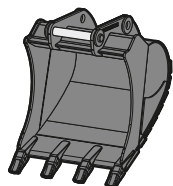
²⁾ with 2 x 50° rotator

³⁾ with 2 x 45° rotator

⁴⁾ rigid ditch cleaning bucket

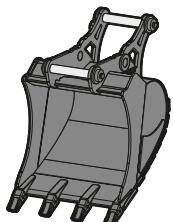
Max. material weight ■ = ≤ 1.8 t/m³, ■ = ≤ 1.5 t/m³, ▲ = ≤ 1.2 t/m³, - = not authorised

Attachments



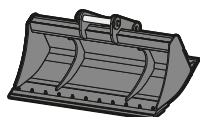
Backhoe bucket TL 01

Mountings		direct mounting, SWA 33 mechanical, SWA 33 hydraulic, SWA 33 Solidlink, Oilquick OQ 45/5, Oilquick OQ 60/5, Open-S 45 mechanical, Open-S 60 mechanical							
Cutting width	mm	300 ²⁾	400 ²⁾	450	550	650	750	850	950
Capacity	m ³	0,15 ³⁾	0,20 ³⁾	0.17	0.22	0.27	0.33	0.38	0.44
Weight ¹⁾	kg	160	185	165	195	210	230	245	260



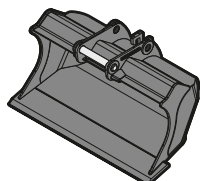
2in1 bucket HTL 01

Mountings		SWA 33 mechanical, SWA 33 hydraulic, SWA 33 Solidlink						
Cutting width	mm	300 ²⁾	400 ²⁾	450	550	650	850	950
Capacity	m ³	0.15	0.20	0.17	0.22	0.27	0.38	0.44
Weight ¹⁾	kg	221	234	210	237	252	288	303



Ditch cleaning bucket (rigid)

GRL rigid 01									
Mountings		direct mounting, SWA 33 mechanical, SWA 33 hydraulic, SWA 33 Solidlink							
Cutting width	mm	1,300	1,500						
Capacity	m ³	0.27	0.33						
Weight ¹⁾	kg	194	214						
GRL rigid 02B									
Mountings		SWA 33 mechanical, SWA 33 hydraulic, SWA 33 Solidlink							
Cutting width	mm	600	800	1,000	1,200	1,400	1,600	1,800	2,000
Capacity	m ³	0.17	0.25	0.30	0.38	0.45	0.50	0.57	0.65
Weight ¹⁾	kg	167	196	225	255	293	330	360	390



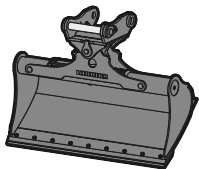
Grading bucket PL 02

Mountings		SWA 33 mechanical, SWA 33 hydraulic, SWA 33 Solidlink, Oilquick OQ 45/5, Oilquick OQ 60/5, Oilquick OQ 65, Open-S 45 mechanical, Open-S 60 mechanical, Open-S 65 mechanical						
Cutting width	mm	1,400					1,600	
Capacity	m ³	0.40					0.50	
Weight ¹⁾	kg	285					315	

¹⁾ weights based on an attachment in a standard design with the machine SWA 33 Solidlink mounting

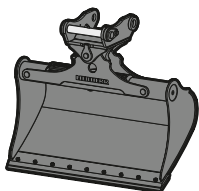
²⁾ limited digging depth due to mounting for SWA 33 quick coupler

³⁾ reduced capacity with direct mounting



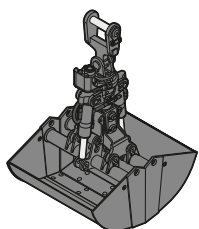
Ditch cleaning bucket GRL 80

Mountings	direct mounting, SWA 33 mechanical, SWA 33 hydraulic, SWA 33 Solidlink					
Cutting width	mm	1,200	1,300	1,500	1,500	1,700
Capacity	m³	0.29	0.28	0.33	0.36	0.41
Weight ¹⁾	kg	345	305	335	420	440
Tilt angle		2 x 50°	2 x 45°	2 x 45°	2 x 50°	2 x 50°



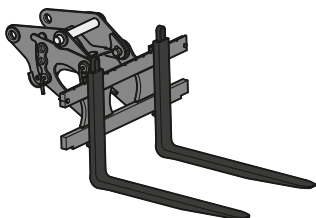
Tilt bucket SL 80

Mountings	SWA 33 mechanical, SWA 33 hydraulic, SWA 33 Solidlink	
Cutting width	mm	1,400
Capacity	m³	0.40
Weight ¹⁾	kg	420
Tilt angle		2 x 50°



Clamshell grab GM 05B

Mountings	direct mounting, SWA 33 mechanical, SWA 33 hydraulic, SWA 33 Solidlink, Oilquick OQ 45/5, Oilquick OQ 60/5, Oilquick OQ 65				
Shell width	mm	300	400	600	800
Capacity	m³	0.10	0.13	0.20	0.27
Opening width	mm	1,217	1,217	1,217	1,217
Weight ²⁾	kg	410	445	475	515



Pallet fork PG SWA 33 FEM II

Mountings	SWA 33 mechanical, SWA 33 hydraulic, SWA 33 Solidlink	
Pallet forks length	mm	1,200
Max. width pallet fork	mm	1,245
Lift capacity (ISO 2328)	t	2.5
Weight	kg	330

¹⁾ weights based on an attachment in a standard design with the machine SWA 33 Solidlink mounting

²⁾ weights without suspension

Equipment

Undercarriage

	A 909 Compact	A 911 Compact
General		
Towing jaw	+	+
Trailer coupling with bolt (diameter of towing eye 40 mm), automatic	+	+
Grab suspension bracket	+	+
Hydraulic connection for tipping the trailer (single-acting tipping cylinder)	+	+
Mudguards (rear and front)	+	+
Lubrication undercarriage (decentral), manual (grease points)	●	●
Storage compartment left	●	●
Storage compartment right	+	+
Power socket for lighting extension coupling, 24 V (ISO 1185 Typ N) (rear)	+	+
Central lubrication of undercarriage, manual (one grease point)	+	+
Stabilization & driving		
Rear stabilizer blade 2,350 mm	●	-
Rear stabilizer blade 2,500 mm	-	●
Rear two-piece and front stabilizer blade 2,350 mm	+	-
Rear two-piece and front stabilizer blade 2,500 mm	-	+
All wheel steering*	+	+
Individual control, two outriggers	+	+
Individual control, two-piece blade	+	+
Travel speed of 20 km/h	●	●
Guard for piston rods, rear outriggers and front blade	+	+
Piston rod guard for rear blade	+	+
Guard for piston rods, rear and front blade	+	+
Automatic swing axle lock	●	●
Rear outriggers, front stabilizer blade 2,350 mm	+	-
Rear outriggers, front stabilizer blade 2,500 mm	-	+
Alliance HD I-331 500/45-20 single tyres	+	-
Single tyres, Alliance HD I-331 600/40-22.5	-	+
Speeder 30 km/h	+	+
Speeder 37 km/h	+	+
Twin tyres, Delcora SGX-1, 275/70 R 22.5	+	-
Twin tyres, Liebherr EM 22, 290/90-20 PR 18	-	+
Twin tyres, Mitas EM-22, 9.00-20 PR 14	●	●

Uppercarriage

	A 909 Compact	A 911 Compact
General		
Lubrication uppercarriage and equipment (decentralised), manual (grease points)	●	●
Tool set including storage case	●	●
Automatic central lubrication system, uppercarriage and attachment	+	+
Hydraulic & engine		
Tank refilling pump fuel	+	+
Hydraulic oil, Liebherr Hydraulic HVI (-20 to +40 °C)	●	●
Hydraulic oil, Liebherr Hydraulic Plus, high performance oil (-30 to +45 °C)	+	+
Automatic engine shutdown after idling (with timer)	+	+
Automatic engine shutdown after idling (without timer)	+	+
Engine performance (to ISO 9249) 55 kW / 75 HP	●	●
Engine performance (to ISO 9249) 80 kW / 109 HP	+	+
Bypass filter for hydraulic oil	+	+
Preheating fuel*	+	+



Equipment

	A 909 Compact	A 911 Compact
Boom		
Floating boom	+	+
Two-piece boom 4.40 m	●	-
Two-piece boom 4.65 m	-	●
Offset two-piece boom 4.50 m	+	-
Offset two-piece boom 4.80 m	-	+
Stick & attachment mounting		
Coupling system Solidlink for quick coupler SWA 33	+	+
Load holding valve for tipping cylinder	+	+
Load holding valve for tipping cylinder (both sides)	+	+
Stick 1.75 m	+	-
Stick 1.90 m	●	+
Stick 2.05 m	-	●
Quick coupler HS 08	+	+
Quick coupler SWA 33 hydraulic	+	+
Hydraulic hose guard Solidlink	+	+
Tilt unit LiTiU 11 direct mounting	+	+
Tilt unit LiTiU 11 direct mounting with Solidlink	+	+
Tilt unit with HS 08	+	+
Signal contacts for Solidlink 14-pin	+	+
Power socket on stick (24 V) via signal contacts	+	+
Power socket on stick, 24 V / 10 A (ISO 1724)	+	+
Preparation for competitor quick coupler with relief valve	+	+
Preparation for competitor quick coupler without relief valve	+	+
Centralised lubrication extended for quick coupler	+	+
Centralised lubrication extended for connecting link	+	+



Control

	A 909 Compact	A 911 Compact
Safety & operation		
Digging brake, automatic	+	+
Ride control	+	+
Automatic engine idling / speed increase	●	●
Positioning swing brake automatic	+	+
Power Plus for Tools	+	+
Overload warning system	●	●
Hydraulic & control		
10" colour touchscreen	●	●
Control pattern digital	●	●
Display with haptic feedback	●	●
DEF level on touchscreen	●	●
High-pressure circuit with Tool Control, 2-pipe system with release valve and leak oil line	+	+
High-pressure circuit with Tool Control, 3-pipe system with hammer return line	+	+
Joysticks Premium	●	●
Fuel level on touchscreen	●	●
Wheel and joystick steering	+	+
Machine settings personalised on display	●	●
Medium pressure circuit	●	●
Mode selector	●	●
Touchpad 3.5"	●	●
Preparation for tiltrotator	+	+
Assistance systems		
Electronic anti-theft protection with key	+	+
Cruise control	●	●
Rear view and right hand side view monitoring cameras	●	●
Smartphone interface	●	●
Smart Key Standard	●	●
Preparation for machine guidance system	+	+



Cab

	A 909 Compact	A 911 Compact
Interior		
2-points seat belt, 2"	•	•
Storage tablet	•	•
Storage nets	•	•
Armrests adjustable in length, height and inclination	•	•
Double pedal, left	+	+
Operator's seat Standard	•	•
Operator's seat Comfort	+	+
Travel alarm system switchable	+	+
Travel alarm system Brigade BBS switchable	+	+
Fire extinguisher	+	+
Air-conditioned bottle holder	•	•
Hand free kit	•	•
Seat belt reminder	•	•
Air-conditioning	•	•
Steering column	•	•
Multifunction mounting bracket	+	+
Positioning swing brake manual	+	+
Radio Comfort	+	+
Radio pre-installation	•	•
Roll-down sun blinds for windscreen and roof window	•	•
Electric socket in cab (24 V)	•	•
Electric sockets in cab (USB)	•	•
First-aid box	+	+
Warning triangle	+	+
Exterior		
Rearview mirror	•	•
Full beam road headlight	+	+
Windscreen wiper	•	•
Belt warning device (optical) – green flashing warning light on cab	+	+
Cab air filters, accessible from ground level	•	•
Licence plate holder with light	+	+
Lightbar on cab, LED	+	+
Rain hood over front window opening	•	•
Warning beacon foldable on cab, LED, 1 piece	+	+
Windshield washer fluid tank accessible from ground level	•	•
Retractable laminated two-piece windscreen	•	•



General

Liebherr Connect		
MyLiebherr Maintenance	+	+
MyLiebherr Performance	+	+
MyLiebherr Portal ¹⁾	•	•



Packages

Light package Comfort	•	•
Light package Premium	+	+

• = Standard, + = Option, - = not available

* country-dependent, ¹⁾ free activation required

Options and / or special equipment, supplied by vendors other than Liebherr, are only to be installed with the knowledge and approval of Liebherr in order to retain warranty.

The Liebherr Group



Global and independent: more than 70 years of success

Liebherr was founded in 1949 when, with the development of the world's first mobile tower crane, Hans Liebherr laid the foundations for a family-run company which now has more than 50,000 employees and comprises over 150 companies across every continent. The holding company of the Group is Liebherr-International AG in Bulle, Switzerland, whose shareholders are exclusively members of the Liebherr family.

Technology leadership and pioneering spirit

Liebherr is a pioneer and its forward-looking approach has seen it make important contributions to technology history over a wide variety of industries. Employees throughout the world continue to share the courage of the company founder, sharing a passion to produce innovative products and a determination to provide world-leading equipment and machinery.

Diversified product programme

Liebherr is one of the world's biggest construction machine manufacturers and provides high-quality, user-oriented products and services. Its product programme includes earthmoving machinery, material handling technology, deep foundation machines, mining, mobile and crawler cranes, tower cranes, concrete technology, maritime cranes, aerospace and transportation systems, gear technology and automation systems, refrigerators and freezers, components and hotels.

Customised solutions and maximum customer value

Liebherr solutions are characterised by precision, implementation and longevity. The company is committed to technological excellence and to providing customers with solutions that match their needs exactly. For Liebherr, customer focus does not end with delivery of a product but continues through a comprehensive range of back-up and support services.

www.liebherr.com

Liebherr-Hydraulikbagger GmbH

Liebherrstraße 12 • 88457 Kirchdorf (Iller), Germany • Phone +49 7354 80-0
info.lhb@liebherr.com • www.liebherr.com • www.facebook.com/LiebherrConstruction