

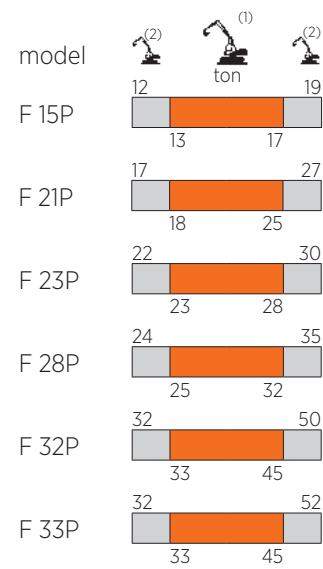
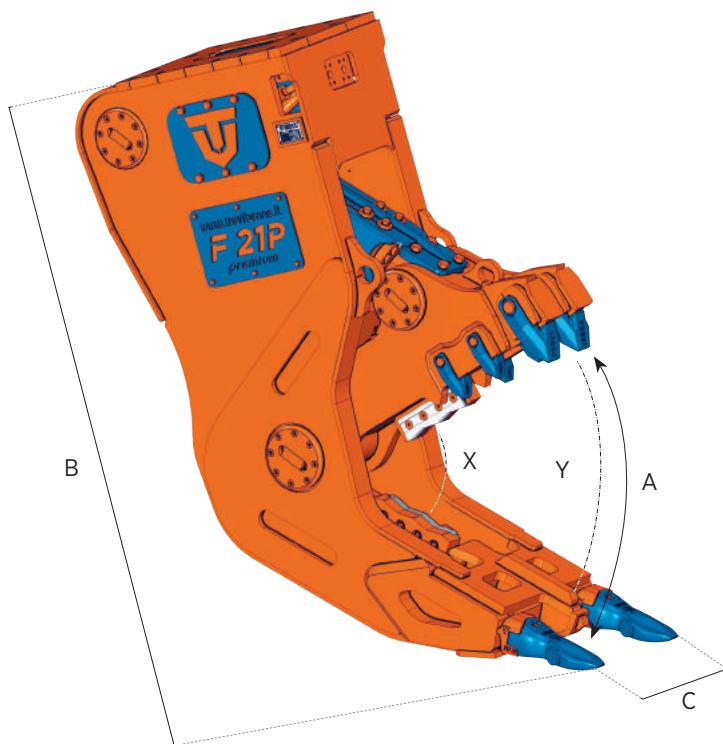


F SERIES

STATIONARY PULVERIZER



- FRANTUMATORE SECONDARIO
- BROYEUR HYDRAULIQUE
- DEMOLEDOR SECUNDARIO
- STARRE PULVERISIERER



(1) Optimum excavator-equipment combination
 Accoppiamento escavatore-attrezzatura ottimale
 Couplage pelle-équipement optimal
 Acoplamiento excavadora-implemento optimal
 Optimale Bagger-Ausrüstung Kombination

(2) Possible excavator-equipment combination
 Accoppiamento escavatore-attrezzatura possibile
 Couplage pelle-équipement possible
 Acoplamiento excavadora-implemento posible
 Mögliche Bagger-Ausrüstung Kombination

	F 15P	F 21P	F 23P*	F 28P	F32P*	F33P
kg.	1370	2070	2470	2680	3290	3360
A	670	835	835	890	890	980
B	1600	1845	2215	1955	2365	2080
C	460	540	540	670	670	740
mm.	220	260	260	260	260	260
X	205	250	250	270	270	340
Y	90	100	100	115	115	140
Ø max	40	45	45	55	55	60
bar	250	250	250	250	250	250
l/min.	130 / 200	180 / 250	180 / 250	230 / 300	230 / 300	250 / 350
max	/	/	140	/	140	/
l/min.	/	/	10 / 20	/	10 / 20	/
	/	/	/	/	/	/



* Modello fornito con rotazione idraulica continua a 360° / * Model equipped with continuous hydraulic 360° rotation / * Modèle équipé de rotation hydraulique à 360° en continu / * Modelo entregado con rotación hidráulica continua a 360° / * Modell ausgestattet mit hydraulischer kontinuierliche 360° Drehvorrichtung

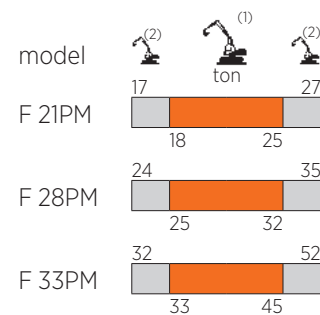
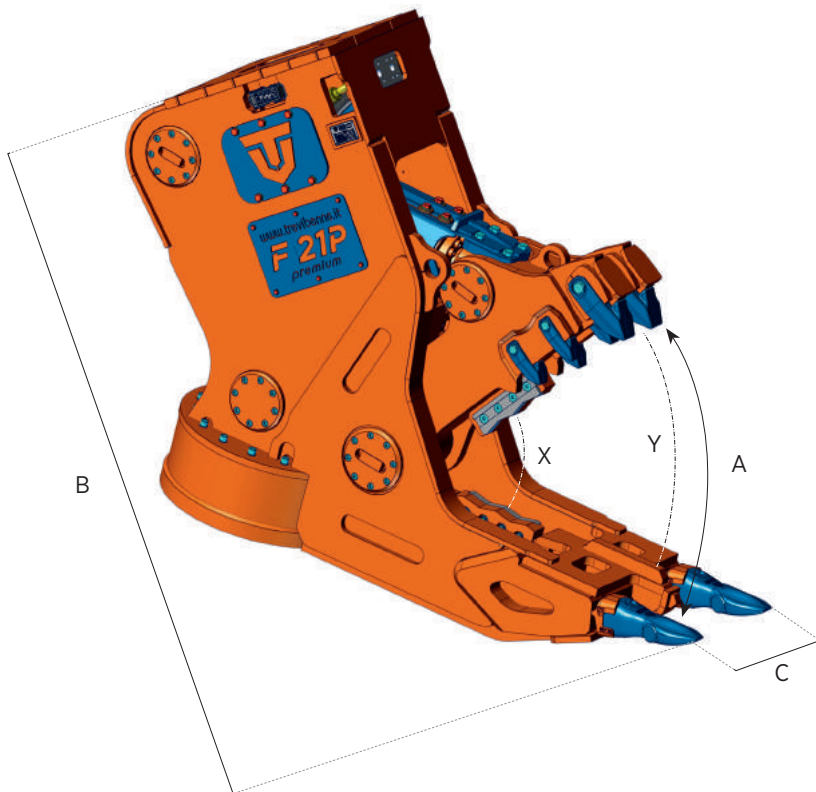


F SERIES

PREMIUM
line

STATIONARY PULVERIZER with magnet

- FRANTUMATORE SECONDARIO CON MAGNETE
- BROYEUR HYDRAULIQUE AVEC AIMANT
- DEMOLEDOR SECUNDARIO CON IMÁN
- STARRE PULVERISIERER MIT MAGNET



- (1) Optimum excavator-equipment combination
 Accoppiamento escavatore-attrezzatura ottimale
 Couplage pelle-équipement optimal
 Acoplamiento excavadora-implemento optimal
 Optimale Bagger-Ausrüstung Kombination
- (2) Possible excavator-equipment combination
 Accoppiamento escavatore-attrezzatura possibile
 Couplage pelle-équipement possible
 Acoplamiento excavadora-implemento posible
 Mögliche Bagger-Ausrüstung Kombination

		F 21PM	F 28PM	F 33PM
	kg.	2480	3250	3970
	mm.	660	770	770
A	mm.	835	890	980
B	mm.	1845	1955	2080
C	mm.	540	670	740
	mm.	260	260	260
X	t.	250	270	340
Y	t.	100	115	140
Ø max	mm.	45	55	60
	bar	250	250	250
	l/min.	180 / 250	230 / 300	250 / 300
	bar	/	/	/
	l/min.	/	/	/
		/	/	/



HARDOX
WEAR PLATE



HARDOX
IN MY BODY